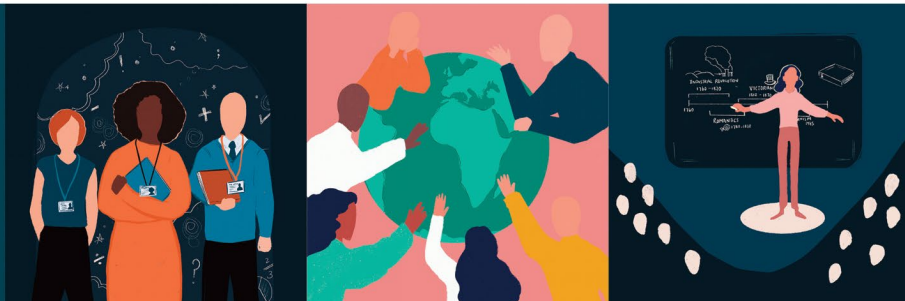




Events



ISSUE 11

Thursday 20 March 2025
Spring Term Issue

Continuing Professional Development Offers from SWIFT & Our Partners

High quality CPD at affordable rates to enhance professional development in your school.
Access through your SWIFT Membership package at no charge and/or discounted rates.
Or as a non-member, you can access the programmes on a pay-as-you-go basis.

[YOU CAN READ HERE TO FIND OUT MORE ABOUT UPCOMING EVENTS AND THANK YOU FOR FORWARDING TO YOUR COLLEAGUES](#)

SWIFT Summer Conference 2025

Thursday 19 June 2025, 0830 – 1545, Future Skills Centre Exeter

It is my pleasure to invite you to the SWIFT Summer Conference 2025 (#SWIFTConf25), a premier event dedicated to empowering educators, fostering innovation and driving excellence in education.

Taking place on **Thursday 19 June 2025** at the Future Skills Centre in Exeter, this conference promises to be an inspiring and enriching experience for all attendees.

This year, we are delighted to host an exceptional lineup of speakers who will share insights on some of the most pressing topics in education today. From Dan Fitzpatrick's thought-provoking session on AI's role in leadership to Lauren Rowles MBE's inspiring journey of resilience and perseverance, the Summer Conference offers invaluable learning opportunities. Additionally, experts such as Professor Rob Coe, Bennie Kara, Cassie Buchanan OBE and many more will provide key insights on leadership, diversity, pupil engagement and educational strategy.

At SWIFT, we are committed to supporting educators with access to world-class research and best practices. We recognise the unique challenges that schools face, particularly in rural and coastal communities and our conference is designed to provide practical strategies that can make a real difference in your schools.

We warmly encourage you to join us for this unmissable event. Secure your place today and be part of a transformative day of learning, collaboration, and inspiration.

I look forward to welcoming you to #SWIFTConf25!

Best regards,

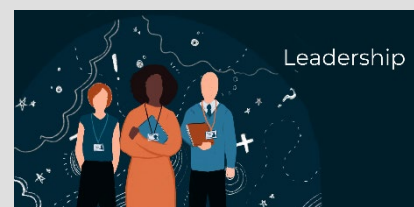
Martin Smith

Executive Director of SWIFT

Contact us

If you have any questions, please contact

Robin.Scott@sw-ift.org.uk



Cost: SWIFT Members | £100, Other Colleagues | £150

REGISTER [HERE](#)

SWIFT New Horizons Leadership Event

Tuesday 1 April 2025, 0830 - 1530, The Devon Hotel Exeter

This event provides school leaders and middle leaders with the opportunity to gain insight into many key aspects of the future changing landscape in education, with a focus on building understanding of many imminent reforms that will support schools to forge ahead with confidence.

The day includes guest speakers equipped to myth-bust and troubleshoot in many areas where schools may be feeling unsure, as we are imparted with information about Ofsted Framework reforms, the role of RISE teams, and advances in the use of AI to support assessment.

The full agenda and presenters list can be found below and will support you as a school leader to feel well prepared to scan the educational horizon with confidence.

Target Audience

School Leaders and Middle Leaders from all school types. (The event content is aimed at all phases/school types in the morning and secondary colleagues in the afternoon, although primary leaders are welcome to stay all day if they wish.)

Speakers

Morning

- Helen Philpott and Joe Ambrose - South West Regional Improvement for Standards and Excellence (RISE) Team - *Myth Busting: What schools need to know - Updates on the aims of the RISE programme and the potential for further partnership working as part of this.*
- Tracey Reynolds - South West Senior His Majesty's Inspector - *Ofsted Reforms and Support for Schools - Changes to the inspection framework, including updates on score cards and the percentile ranks.*
- Martin Swift - Executive Director of SWIFT - *SWIFT Membership*
- Jon Lunn - Director of Performance (Ted Wragg Trust) - *Pilot of the new Ofsted Framework - Sharing experiences from 2 pilots of the proposed Ofsted Framework.*

Afternoon

- Justin Coombes - AQA Executive Team - *The use of technology for assessment - AI for diagnostic and formative data insight tools for schools and MATs or the potential strategy towards digital exams.*
- Michelle Sullivan - RE lead, Blackdown Education Partnership (Holyrood Academy) - *Updates for changes in the statutory entitlement and requirements for the delivery of Religious Education*
- Alan Blackburn - Director for School Performance (Blackdown Education Partnership) - *Impact of Pupil Mobility, KS4 Data Checking Exercise*

The event content is aimed at all phases/school types in the morning and secondary colleagues in the afternoon, although primary leaders are welcome to stay all day if they wish.

Cost: SWIFT Members:

All Day ticket, including lunch (0830 - 1530) - £50

Afternoon Only - (1230 - 1530) FREE

Non- Members:

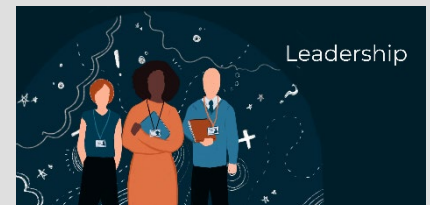
All Day ticket, including lunch (0830 - 1530) - £85

Afternoon Only - (1230 - 1530) £35

Contact us

If you have any questions, please contact

becki.mills@sw-ift.org.uk



REGISTER [HERE](#)

Early Years Moderation (Exeter)

Thursday 1 May 2025, 0930 - 1230, Countess Wear Community School Exeter

The session will provide teachers with the opportunity to:

- quality assure their assessment judgements
- have professional discussions with colleagues regarding children's attainment against the ELGs
- work together so that teachers can share experiences and develop their assessment skills
- build a shared understanding of the ELGs and EYFS framework

Please note: this session will not require teachers to gather any unnecessary or additional evidence as the majority of the session will be based on teachers own knowledge of their children.

Trainer

Tamsin Robertson (Early Years Consultant) - Devon Education Services.

Cost: £55 per person for SWIFT member schools | £85 per person for non-member schools

Contact us

If you have any questions, please contact

robin.scott@sw-ift.org.uk



REGISTER [HERE](#)

KS1 Cross-School Writing Moderation

Thursday 1 May 2025, 1315 – 1615, Oldway Primary School, Paignton

An opportunity to look at writing with other KS1 colleagues (with a focus particularly on Year 2 Teachers) and have a professional dialogue based on judgements and evidence. Supporting in school writing assessment judgements.

By the end of the session you will have:

- Increased confidence around assessing writing across KS1
- Completed professional dialogues about writing samples/collections
- Increased knowledge about writing moderation and support available
- Made cross school links with other colleagues

Delegates will be required to bring with them samples of writing to moderate with peers.

Target Audience

KS1 – Particular focus on Year 2

Costs

SWIFT Members: £55

Other colleagues: £85

FIND MORE INFORMATION [HERE](#)

Talk for Writing Showcase Open Morning

Thursday 27 March 2025, 0915 – 1200, Kingsbridge Primary School



Join us for an immersive Talk for Writing Showcase morning, where you will experience this powerful approach in action.

- Observe Talk for Writing lessons in real classrooms
- Explore pupils' work and see the impact in their books
- Learn more about the approach and its benefits
- Discuss our implementation journey and ask questions

We are proud to have been awarded Showcase School status after just two and a half years of implementation. Our journey is still ongoing, making this an ideal opportunity for leaders looking to develop a consistent and high-quality approach to writing in their own schools.

For more information and bookings, please contact:

miranda.martyn@kingsbridgeprimary.org.uk

FIND MORE INFORMATION [HERE](#)

FREE Support for Pupil Premium Key Stage 2 Pupils

We are pleased announce an exciting opportunity to provide direct support for Key Stage 2 Pupil Premium (PP) pupils in your school.

Atom Learning, The Colyton Foundation and SWIFT are working together in a positive partnership to provide **FREE** access to Atom Home to pupils across Cornwall, Devon, Dorset and Somerset primary schools.

This responsive online learning platform is proven to successfully support attainment through tailored support that builds confidence, strengthens knowledge, and prepares children for the transition to secondary education.

FIND MORE INFORMATION [HERE](#)

Professional Communities

Professional Communities bring colleagues together to network, connect with leading practice, hear from expert speakers, and provide mutual support. Held termly, our team of Professional Community Leads provide a high level of expertise, enabling the design of high-quality agendas, recruitment of expert speakers and the identification of local expertise. Contributors include leading national voices and key officials from national agencies, including Ofsted and researchers from the Education Endowment Fund (EEF).



- School Business Management
- Primary Oracy
- Primary Languages
- Primary SEND
- Primary Art
- Equality & Diversity
- Estates Management
- Primary Design & Technology
- Primary Character Education
- RE
- PSHE
- Safeguarding
- Primary Geography & History
- Secondary Computing
- Secondary Geography
- Primary Curriculum & Assessment

FIND MORE INFORMATION [HERE](#)

Primary Subject Leader Briefings

Early Years, Maths and English Subject Leader Briefings for primaries are designed to provide termly updates, guidance and examples of effective practice, drawing on area and national sources. Briefings are delivered by experts and planned in co-ordination with our Subject Masterclasses and Professional Communities.



- Early Years with Phil Armstrong | Early Excellence
- English with Danni Cooke | Ilsham English Hub Lead
- Maths with Josh Lury | CODE Maths Hub

No charge for SWIFT members.

FIND MORE INFORMATION [HERE](#)

Upcoming Events – March / April / May 2025

EYFS & PRIMARY

★ **Primary Science Subject Leader Briefing | Wednesday 26 March | 1300 - 1600 | Online | RTSA**

Book your place [HERE](#)

★ **Inclusion of Growth Mindset Concepts in Early Years Practice & Provision | Wednesday 2 April | 1330 - 1500 | Online | ECSA**

Book your place [HERE](#)

★ **Early Years Subject Briefing ONLINE | Thursday 24 April | 0930 - 1530 | Online | ECSA**

Book your place [HERE](#)

★ **TA Training: Promoting positive interactions in the primary classroom | Tuesday 29 April | 1230 - 1500 | Countess Wear Community School | ECSA**

Book your place [HERE](#)

★ **KS2 Cross-School Writing Moderation | Wednesday 30 April | 1315 - 1530 | Oldway Primary School | RTSA**

Book your place [HERE](#)

★ **Early Years Moderation (Exeter) | Thursday 1 May | 0930 - 1230 | Countess Wear Community School | ECSA**

Book your place [HERE](#)

★ **KS1 Cross-School Writing Moderation | Thursday 1 May | 1315 - 1615 | Oldway Primary School | RTSA**

Book your place [HERE](#)

★ **Writing Moderation: Year 6 (Exeter) | Wednesday 21 May | 0900 - 1200 | Countess Wear Community School | ECSA**

Book your place [HERE](#)

★ **Writing Moderation: Year 2 (Exeter) | Wednesday 21 May | 1300 - 1600 | Countess Wear Community School | ECSA**

Book your place [HERE](#)

CROSSPHASE

★ **Spring Leadership Forum | Thursday 20 March | 1530 - 1700 | Online | SWIFT**

Book your place [HERE](#)

★ **SWIFT New Horizons Leadership Event | Tuesday 1 April | 0830 - 1530 | The Devon Hotel |**

Book your place [HERE](#)

★ **TA Training: Understanding inclusion, diversity and the brain | Friday 9 May | 1000 - 1100 | Online | ECSA**

Book your place [HERE](#)

★ **Understanding Sensory Processing Difficulties | Tuesday 20 May | 0930 - 1230 | Countess Wear Community School | ECSA**

Book your place [HERE](#)

Professional Communities

- **RE Professional Community - Crossphase | Monday 24 March | 1600 - 1730 | Online | ECSA**
Book your place [HERE](#)
- **History Professional Community | Tuesday 25 March | 1530 - 1630 | Online**
Book your place [HERE](#)
- **Primary Languages Professional Community | Tuesday 25 March | 1600 - 1700 | Online | RTSA**
Book your place [HERE](#)
- **Secondary Computing Professional Community | Thursday 1 May | 1600 - 1730 | Online | ECSA**
Book your place [HERE](#)
- **Equality & Diversity Professional Community | Tuesday 6 May | 1430 - 1600 | Online | ECSA**
Book your place [HERE](#)
- **Primary Art Professional Community | Thursday 8 May | 1330 - 1530 | Countess Wear Community School | ECSA**
Book your place [HERE](#)
- **Primary Oracy Professional Community | Monday 12 May | 1600 - 1700 | Online | Tarka**
Book your place [HERE](#)
- **Primary SEND Professional Community | Thursday 22 May | 0845 - 1200 | Future Skills Centre | ECSA**
Book your place [HERE](#)

Other Events for your Diary

Ilsham English Hub

- **Various CPD opportunities**
Find more information [HERE](#)

Empowering Early Years CPD

- **Various CPD opportunities**
Find more information [HERE](#)

Maternity Teacher Paternity Teacher Project

- **Various CPD opportunities**
Find more information [HERE](#)

Cambridge Nationals CPD

- **Various CPD opportunities**
Find more information [HERE](#)

CLEAPSS Courses in Plymouth

- **Various CPD opportunities (Schools need to be a member of CLEAPSS)**
Find more information [HERE](#)

Please note our events are booking through our [website](#) and [Eventbrite](#)

SWIFT Partnership is sponsored by:

