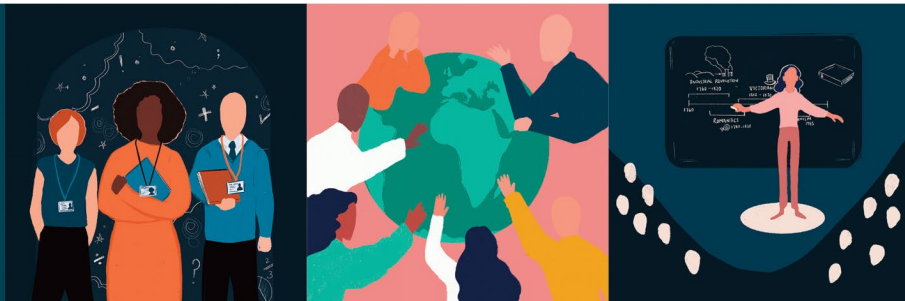




Events



ISSUE 7

Thursday 12 December 2024
Autumn Term Issue

Continuing Professional Development Offers from SWIFT & Our Partners

High quality CPD at affordable rates to enhance professional development in your school.
Access through your SWIFT Membership package at no charge and/or discounted rates.
Or as a non-member, you can access the programmes on a pay-as-you-go basis.

[YOU CAN READ HERE TO FIND OUT MORE ABOUT UPCOMING EVENTS AND THANK YOU FOR FORWARDING TO YOUR COLLEAGUES](#)

Anti-Racism - Ways to Combat Systemic Racism

Starts Thursday 6 February 2025, 1545 – 1715, Online

Session 1: Introduction to Anti-Racism for Primary School Teachers: During our first session we will help educators understand and recognise racism beyond obvious, overt racist language and hateful acts.

Session 2 (Thursday 6 March 2025): Ensuring your classroom, resources used and curriculum is culturally responsive and inclusive: Session 2 focuses on how to take our anti-racism learnings and apply them to our classrooms and teaching practice in practical and accessible ways.

Session 3 (Thursday 3 April 2025): Appropriately responding to racist incidents and racial stereotypes overheard in learners' conversations, comments and questions: This session will focus on helping educators understand the links between racism experienced at school, childhood trauma and how this continues to impact ethnically minoritised adults' lives.

Learning Outcomes

By the end of the session, you will be able to:

- Understand and recognise racism beyond obvious, overt racist language and hateful acts.
- Ensure your classroom and resources are responsive and inclusive.
- Appropriately respond to racist incidents.

Target Audience

Primary School Teachers

Training Lead

Kate Paiano, Founder and Director of Tiny Travels Anti-Racism Education CIC

Contact us

If you have any questions, please contact

kylie.waters@sw-ift.org.uk



Teaching & Learning

Cost: SWIFT Members: £105, Other colleagues: £130

[REGISTER HERE](#)

Supporting Children with ASD and High Anxiety

Thursday 4 February 2025, 0930 - 1230, Countess Wear Community School, Exeter

Many young people on the autistic spectrum also experience high levels of anxiety which can present as a barrier to learning. High levels of anxiety can greatly impact on accessing educational settings, despite a child being very academically able.

This course will aim to explain the causes of autism related anxiety, and how anxiety is expressed. It will aim to share experiences of supporting a child with high levels of anxiety and provide strategies for supporting a child through their anxieties.

Trainer

Lisa McCullagh has over 20 years' experience in the field of Autism and is a parent of a young person diagnosed with Asperger's syndrome. Lisa has a BA Honours degree 1st Class in Childhood and Youth Studies (Open University) and a Post Graduate Diploma and Certificate in Autism from the University of Birmingham. In addition, she has attended numerous training workshops including P.E.C.S. (Picture Exchange Communication System), social stories and the use of visual prompts, sensory processing difficulties, managing anxiety and sexual understanding.

Lisa has worked with young people on the spectrum in a variety of settings including education, social care and the local community. She provides training and advisory services to a range of professionals for the education and care sector.

Cost: £50 per person for SWIFT member schools | £80 per person for non-member schools.

Contact us

If you have any questions, please contact

robin.scott@sw-ift.org.uk



REGISTER [HERE](#)

FREE Support for Pupil Premium Key Stage 2 Pupils

We are pleased announce an exciting opportunity to provide direct support for Key Stage 2 Pupil Premium (PP) pupils in your school.

Atom Learning, The Colyton Foundation and SWIFT are working together in a positive partnership to provide **FREE** access to Atom Home to pupils across Cornwall, Devon, Dorset and Somerset primary schools.

This responsive online learning platform is proven to successfully support attainment through tailored support that builds confidence, strengthens knowledge, and prepares children for the transition to secondary education.

Benefits for your pupils

- Tailored Learning | Atom Home adapts to each child's learning level, ensuring they receive the right support for their individual needs.
- Key Stage 2 Focus | The platform covers all essential content in English, Maths, and Science, supporting your efforts to raise attainment.
- Comprehensive Resources | Pupils will have access to an extensive library of teacher-created practice questions, learning challenges, and resources to support their mastery of the curriculum.

FIND MORE INFORMATION [HERE](#)

Leading Effective Disadvantage Provision for Secondary School Pupils

Starts Tuesday 21 January 2025, 0930 - 1500, Oldway Primary School

The programme will support effective planning for disadvantaged pupils in secondary schools, showing how to measure the impact of strategies but also in knowing what to stop doing. Marc Rowland will share his expertise to teach and empower participants, also presenting on social isolation and focusing on what strong leadership of school culture and expectations can look like as a key in unlocking better outcomes.

Meaningful participation is vital for improved outcomes and this programme offers not only a face-to-face session at RTSA Adult Learning Centre but three additional online sessions, the final one underpinned by a strong and useful evaluation and gap task to strengthen strategic planning moving forward.

Trainer

Marc Rowland has published numerous articles and books on addressing educational disadvantage. He has carried out a number of area-based studies focused on improving educational disadvantage and has helped over a thousand schools. Marc has provided support to the DfE on the use and impact of the pupil premium grant and led the introduction of Jersey pupil premium.

Dates

Day 1 - Tuesday 21 January 2025, 0930-1500 - F2F, Oldway Primary School
Day 2 - Thursday 20 March 2025, 1530-1700, Online
Day 3 - Wednesday 25 June 2025, 1530-1700, Online
Day 4 - Wednesday 9 July 2025, 1530-1700, Online

Cost: £175 per person for SWIFT member schools | £195 per person for non-member schools.

Contact us

If you have any questions, please contact

Kylie.waters@sw-ift.org.uk



Teaching & Learning

REGISTER [HERE](#)

TA Training: New to the role of Teaching Assistant

Thursday 23 January 2025, 1230 – 1500, Countess Wear Community School Exeter

This training will seek to explore the fundamentals of the role of being a teaching assistant. Through a combination of presentation and small group discussion we will look to consider how we can make a difference to the learning and outcomes for those in our care.

We will look and discuss the motivations behind behaviours we may see in school and what might be happening in a child's brain when we are asked to support them. We will consider some practical strategies to manage pupils behaviour positively as well as looking at how we can keep our own mental health healthy by building our own resilience.

About the Trainer

Lucy Herring is Senior Leader of Education, an experienced primary school educator undertaking a range of roles including class teacher, SENCO and school senior leader. Lucy has a particular interest in the barriers to learning faced by vulnerable and disadvantaged learners. Lucy is the Early Years Subject Lead for the Exeter Consortium teacher training programme and also supports teacher trainees in schools as a Lead Mentor. Lucy is passionate about offering a high-quality of education to all children and young people.

Cost: £50 per person for SWIFT member schools | £80 for Non-members.

FIND MORE INFORMATION [HERE](#)

Professional Communities

Professional Communities bring colleagues together to network, connect with leading practice, hear from expert speakers, and provide mutual support. Held termly, our team of Professional Community Leads provide a high level of expertise, enabling the design of high-quality agendas, recruitment of expert speakers and the identification of local expertise. Contributors include leading national voices and key officials from national agencies, including Ofsted and researchers from the Education Endowment Fund (EEF).



- School Business Management
- Primary Oracy
- Primary Languages
- Primary SEND
- Primary Art
- Equality & Diversity
- Estates Management
- Primary Design & Technology
- Primary Character Education
- RE
- PSHE
- Safeguarding
- Primary Geography & History
- Secondary Computing
- Secondary Geography
- Primary Curriculum & Assessment

FIND MORE INFORMATION [HERE](#)

Primary Subject Leader Briefings

Early Years, Maths and English Subject Leader Briefings for primaries are designed to provide termly updates, guidance and examples of effective practice, drawing on area and national sources. Briefings are delivered by experts and planned in co-ordination with our Subject Masterclasses and Professional Communities.



- Early Years with Phil Armstrong | Early Excellence
- English with Danni Cooke | Ilsham English Hub Lead
- Maths with Josh Lury | CODE Maths Hub

No charge for SWIFT members.

FIND MORE INFORMATION [HERE](#)

The Laurel Trust - Funding available for innovative school-based projects

The Laurel Trust is offering schools in all phases, including early years and special schools/settings, an opportunity to apply for funding. The proposed research must focus on improving the life chances for children and young people from educationally disadvantaged backgrounds. The theme of this year's research is Effective Transitions: educational readiness for every child at every phase.

The grants are designed to support groups of schools to work together to re-imagine education in our current world, and to place emphasis on a culture rooted in emotional and academic resilience.

This opportunity to apply for grant funding closes on **28 February 2025**.

For schools who are considering making an application, and wish to find out more about The Laurel Trust, and most importantly, wish to receive some guidance on making your application, you can contact Derrick Brett who is arranging teams' meetings.

FIND MORE INFORMATION [HERE](#) AND CONTACT DERRICK BRETT [HERE](#)

Upcoming Events - December 2024 & January 2025

EYFS & PRIMARY

★ **Early Years Subject Briefing | Thursday 9 January | 0930 - 1530 | Online | ECSA**

Book your place [HERE](#)

★ **Using Loose Parts to Elevate Imagination and Language Development | Thursday 16 January | 1300 - 1600 | Countess Wear Community School, Exeter | ECSA**

Book your place [HERE](#)

★ **Primary English Subject Leader Briefing | Thursday 16 January | 1300 - 1500 | Online | Tarka**

Book your place [HERE](#)

★ **Leading Effective Disadvantage Provision for Primary School Pupils | Monday 20 January | 0930 - 1500 | Oldway Primary School | RTSA**

Book your place [HERE](#)

★ **Outstanding Curriculum Design for Primary Languages Programme | Monday 20 January | 1530 - 1700 | Online | RTSA**

Book your place [HERE](#)

★ **Role of physical skill enabling environments to enhance reading & writing | Wednesday 22 January | 1000 - 1130 | Online | ECSA**

Book your place [HERE](#)

★ **TA Training: New to the role of Teaching Assistant | Thursday 23 January | 1230 - 1500 | Countess Wear Community School | ECSA**

Book your place [HERE](#)

★ **Inclusion of growth mindset concepts in Early Years practice & provision | Friday 31 January | 1000 - 1130 | Online | ECSA**

Book your place [HERE](#)

★ **Supporting Children with ASD and High Anxiety | Tuesday 4 February | 0930 - 1230 | Countess Wear Community School | ECSA**

Book your place [HERE](#)

★ **Ensuring an Ambitious Curriculum for Early Years Pupils | Tuesday 4 February | 1230 - 1530 | Oldway Primary School | RTSA**

Book your place [HERE](#)

★ **Anti-Racism - Ways to Combat Systemic Racism | Thursday 6 February | 1545 - 1715 | Online | RTSA**

Book your place [HERE](#)

★ **Moderation for Nursery Teachers | Wednesday 12 February | 1230 - 1530 | Oldway Primary School | RTSA**

Book your place [HERE](#)

★ **TA Training: Building healthy brains for learning & improved outcomes! | Friday 28 February | 1000 - 1130 | Online | ECSA**

Book your place [HERE](#)

SECONDARY

★ **Leading Effective Disadvantage Provision for Secondary School Pupils | Tuesday 21 January | 0930 - 1500 | Oldway Primary School | RTSA**

Book your place [HERE](#)

★ **Outstanding Curriculum Design for Secondary Languages Programme | Monday 3 February | 1530 - 1700 | Online | RTSA**

Book your place [HERE](#)

Professional Communities

- **Equality & Diversity Professional Community | Tuesday 28 January | 1430 - 1600 | Online | ECSA**
Book your place [HERE](#)
- **Primary Languages Professional Community | Tuesday 28 January | 1545 - 1715 | Online | RTSA**
Book your place [HERE](#)
- **Primary SEND Professional Community | Thursday 30 January | 0845 - 1200 | Future Skills Centre, Exeter | ECSA**
Book your place [HERE](#)
- **Primary Art Professional Community | Thursday 30 January | 1330 - 1530 | Countess Wear Community School | ECSA**
Book your place [HERE](#)
- **Secondary Curriculum, Assessment and Data Professional Community | Monday 3 February | 0945 - 1200 | Uffculme School | BEP**
Book your place [HERE](#)
- **School Business Management Professional Community | Tuesday 11 February | 1300 - 1500 | Online | ECSA**
Book your place [HERE](#)
- **Secondary Computing Professional Community | Thursday 13 February | 1600 - 1730 | Online | ECSA**
Book your place [HERE](#)
- **Primary Oracy Professional Community | Wednesday 26 February | 1600 - 1700 | Online | Tarka**
Book your place [HERE](#)
- **PSHE Professional Community | Thursday 27 February | 1330 - 1530 | Countess Wear Community School | ECSA**
Book your place [HERE](#)

Other Events for your Diary

Ilsham English Hub

- **Ilsham English Hub Conference – 31 January 2025**
Find more information [HERE](#)

Empowering Early Years CPD

- **Various CPD opportunities**
Find more information [HERE](#)

Cambridge Nationals CPD

- **Various CPD opportunities**
Find more information [HERE](#)

Kingsbridge Research School

- **Cognitive Research Mini Sessions**
Find more information [HERE](#)

The Cornerstone English Hub and the Devon and Dorset Computing Hub

- **Various CPD opportunities**
Find more information [HERE](#)

Please note our events are booking through our [website](#) and [Eventbrite](#)

SWIFT Partnership is sponsored by:





www.sw-ift.org.uk

