



Events



ISSUE 1

Thursday 12 September 2024
Autumn Term

Continuing Professional Development Offers from SWIFT & Our Partners

High quality CPD at affordable rates to enhance professional development in your school.
Access through your SWIFT Membership package at no charge and/or discounted rates.
Or as a non-member, you can access the programmes on a pay-as-you-go basis.

[YOU CAN READ HERE TO FIND OUT MORE ABOUT UPCOMING EVENTS AND THANK YOU FOR FORWARDING TO YOUR COLLEAGUES](#)

SWIFT Membership 2024 - 2025

Welcome to SWIFT Membership for 2024 – 2025. We are delighted that so many schools, federations, trusts and other bodies have joined or renewed.

Don't forget that as a member you have unlimited access to the following highlights:

- Members' discount on an extensive range of **professional development courses and conferences**. We work with leading national trainers like **Paul Dix** and **Mark Rowland** as well as experts from the region.
- Free / unlimited access to over 25 termly **subject and leadership professional communities**
- Free / unlimited access to termly **Leadership Forum** and **Curriculum Forum**
- Free / unlimited access to **Primary Subject Leader briefings** for Early Years, Maths, English and Science
- Free access to **Secondary School Performance Analysis** through Jon Lunn (Performance Director for Ted Wragg MAT)
- Subsidised **Leadership Study Visits** to schools and trusts within the region and across England (limited places)

SWIFT Membership saves staff time as well as money. Our booking system on Eventbrite enables quick access to all our events and makes it quick and easy to register. Many of the 2024-2025 courses are live for bookings now ([HERE](#)) and many more will be added across the year. Increasingly, schools are using SWIFT to support staff training linked to appraisal, providing a quick, one-stop-shop for staff development needs.

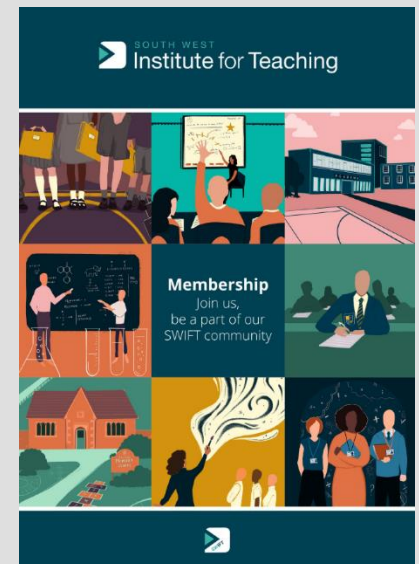
It's not too late to join. SWIFT Membership offers schools and trusts outstanding value. Our low-cost, £2 per pupil fee offers you unlimited access.

If you are a federation or trust you can simply register all your schools together and take advantage of the discounts available (See Prospectus [HERE](#))

Contact us

If you have any questions, please contact

info@sw-ift.org.uk



REGISTER [HERE](#)

NATIONAL PROFESSIONAL QUALIFICATIONS | APPLY NOW!

The application window is closing soon for the Autumn 2024 cohort of NPQ programmes. SWIFT in partnership with Leading School South West has an excellent and proven track record in the delivery and completion of NPQs in the region. Over 1260 teachers and leaders in Devon have followed our NPQ programmes in the past three years. Our programmes are facilitated by serving expert local school leaders. All in-person elements of our programmes take place as close as possible to the geographical locations of participants. In the current cohort, in person events take place in Exeter, Plymouth, Buckfast, St Austell and Taunton.

After an extensive 6-month NPQ programme evaluation, this Autumn we are working with two lead providers, Teach First and the National Institute of Teaching to offer schools the best possible NPQ programmes available. Below we outline the lead provider programmes and more information is available [HERE](#):

Teach First Programmes 2024 -2025	NIoT Programmes 2024 -2025
<ul style="list-style-type: none"> ❖ NPQ in Executive Leadership ❖ NPQ in Early Years Leadership ❖ NPQ in Senior Leadership ❖ NPQ in Leading Literacy ❖ NPQ in Leading Primary Maths ❖ NPQ in Leading Teacher Development 	<ul style="list-style-type: none"> ❖ NPQ in Headship ❖ Early Headship Coaching Offer ❖ NPQ for SENCO ❖ NPQ in Leading Behaviour and Culture ❖ NPQ in Leading Teaching

HOW TO APPLY

When applying for the NPQ programme, applicants must select the correct application link and associated guidance. Below are the application links and application guidance for the each of our lead providers:

Teach First NPQ Programmes Application Form	National Institute of Teaching NPQ Programme Application Form
Teach First NPQ Application Guidance	National Institute of Teaching NPQ Application Guidance

We will be able to guarantee a place on the programme for all applications which meet our selection criteria. Scholarship funded places **are limited** nationally and so early application is recommended. To find out if your school is eligible to apply for a funded place, you can check [the DfE guidance](#). We encourage applications to be submitted by **13 September 2024**.

If you have any queries regarding the programmes or application process, please do get in touch - fiona.mcneile@sw-ift.org.uk

FIND MORE INFORMATION [HERE](#)

Primary Staff Meeting Series

Practical Primary Writing – Starts Wednesday 2 October 2024

A practical Primary Writing course with plenty of take-aways to put straight into practice.

Adaptive Teaching – Starts Wednesday 9 October 2024

SWIFT are collaborating with nasen (National Association for Special Educational Needs) to design a series of staff meetings across the academic year to support primary schools to embed adaptive teaching.

‘Write Inspired’ Primary Writing – Starts Monday 21 October 2024

A practical, thought-provoking look at how to inspire children to write and enjoy it.

FIND MORE INFORMATION [HERE](#)

Upcoming Featured Programmes

Advanced Coaching Programme for School Leaders

Starts Wednesday 25 September 2024 | 0930 – 1600 | Countess Wear Community School, Exeter

An ILM approved programme in coaching techniques to enhance your leadership and enable you to develop others effectively.

Aims

- Understand behavioural preferences to improve your self-awareness
- Understand human psychology using cognitive behavioural models
- Refine coaching skills and knowledge using two coaching models
- Practice coaching approaches and methodologies
- Know how to best utilise coaching within school settings
- Create opportunities to apply and evaluate coaching in your setting

Cost: £350 per person for SWIFT member schools | £450 for non-members. Attendance includes a complimentary full DISC® Profile Assessment and ILM certificate.

FIND MORE INFORMATION [HERE](#)

'12 Dialogues for Boys & Young Men' Being Safe & Safe to be Around

Friday 4 October 2024 | 0900 – 1515 | Oldway Primary School

Work with Michael Conroy; creator of the internationally recognised '12 Dialogues for Boys & Young Men' Being Safe & Safe to be Around.

This training day aims to make 'doing something' feel not just possible but essential and desirable, by equipping those who work with boys/young men to facilitate constructive, strength-based, optimistic dialogues with them that avoid common pitfalls. In addition to helping meet intrinsic ambitions to have positive impact, the training can help settings satisfy and surpass rising extrinsic expectations (such as those of Ofsted, DfE) by combining staff motivation with practical steps, knowledge and confidence, enabling them not just to tick boxes but to genuinely change the script for an emerging generation of boys and young men and the women and girls around them.

Target Audience

Teaching and Support Staff (Years 6 - 13)

Cost: £155 per delegate for SWIFT member schools | £205 for non-members.

FIND MORE INFORMATION [HERE](#)

Teach Like a Champion (TLAC): Building Strong Classroom Culture

Starts Tuesday 5 November 2024 | 1600 - 1730 | Online

SWIFT is delighted to be working in partnership with Doug Lemov's Teach Like a Champion (TLAC) team, to provide schools with a comprehensive online Train-the-Trainer programme. The outcome of the 'Building Strong Classroom Cultures' training programme is to build school cultures and practices that enable joy and academic achievement for our learners. Participants will master key skills in creating classrooms with strong cultures and therefore rigorous and engaging academic instruction to thrive.

A series of five 90-minute interactive training sessions for each of the following audiences: School Leaders, Coaches, Middle Leaders and Teachers across all age phases. Sessions are spread across the academic year to maximise successful implementation in schools, allowing attendees to trial strategies and experience the power of the pedagogical approaches in their schools.

Cost: £345 per delegate for SWIFT member schools | £385 for non-members.

FIND MORE INFORMATION [HERE](#)

Professional Communities

Professional Communities bring colleagues together to network, connect with leading practice, hear from expert speakers, and provide mutual support. Held termly, our team of Professional Community Leads provide a high level of expertise, enabling the design of high-quality agendas, recruitment of expert speakers and the identification of local expertise. Contributors include leading national voices and key officials from national agencies, including Ofsted and researchers from the Education Endowment Fund (EEF).



- School Business Management
- Primary Oracy
- Primary Languages
- Primary SEND
- Primary Art
- Equality & Diversity
- Estates Management
- Primary Design & Technology
- Primary Character Education
- RE
- PSHE
- Safeguarding
- Primary Geography & History
- Secondary Computing
- Primary Curriculum & Assessment

FIND MORE INFORMATION [HERE](#)

Primary Subject Leader Briefings

Early Years, Maths and English Subject Leader Briefings for primaries are designed to provide termly updates, guidance and examples of effective practice, drawing on area and national sources. Briefings are delivered by experts and planned in co-ordination with our Subject Masterclasses and Professional Communities.



- Early Years with Phil Armstrong | Early Excellence
- English with Danni Cooke | Ilsham English Hub Lead
- Maths with Josh Lury | CODE Maths Hub

No charge for SWIFT members.

REGISTER [HERE](#)

Teaching & Assessment in Primary Science Focus4TAPS 3 Day Programme Starts Friday 8 November 2024 | 0930 - 1530 | Oldway Primary School

This is a chance for schools to access the Focus4TAPS 3-day primary science CPD programme. Focus4TAPS is designed to support teachers to improve their teaching and assessment of science in primary schools. The training provides a toolkit of resources and activities for teachers to use, however teachers are also encouraged to apply the principals to their own planning, so that the approaches become embedded in their teaching.

Target Audience

KS1 & KS2 Primary Science Subject Leaders and Teachers

Day 1 - Friday 8 November 2024 - 0930 - 1530

Day 2 - Friday 28 February 2025 - 0930 - 1530

Day 3 - Friday 6 June 2025 - 0930 - 1530

Cost: £295 per delegates for SWIFT member schools | £365 for Non-members.

FIND MORE INFORMATION [HERE](#)

Upcoming Events - September/October/November 2024

EYFS & PRIMARY

☆ **Early Years Subject Briefing** | Thursday 26 September | 0930 - 1530 | Online | ECSA

Book your place [HERE](#)

☆ **Primary English Subject Leader Briefing** | Thursday 26 September | 1300 - 1500 | Online | Tarka

Book your place [HERE](#)

☆ **Social Stories Training** | Wednesday 2 October | 0930 - 1130 | Countess Wear Community School, Exeter | ECSA

Book your place [HERE](#)

☆ **Practical Primary Writing: Staff Meeting Series** | Wednesday 2 October | 1545 - 1715 | Online | Tarka

Book your place [HERE](#)

☆ **Adaptive Teaching: Primary Staff Meeting Series** | Wednesday 9 October | 1545 - 1715 | Online | Tarka

Book your place [HERE](#)

☆ **Scaffolding learning within continuous provision** | Wednesday 16 October | 1000 - 1130 | Online | ECSA

Book your place [HERE](#)

☆ **'Write Inspired' Primary Writing: Staff Meeting Series** | Monday 21 October | 1545 - 1715 | Online | Tarka

Book your place [HERE](#)

☆ **Teaching & Assessment in Primary Science Focus4TAPS 3 Day Programme** | Starts Friday 8 November | 0930 - 1530 | Oldway Primary School | RTSA

Book your place [HERE](#)

☆ **Primary Maths Subject Leader Briefing** | Wednesday 13 November | 1300 - 1600 | Online | RTSA

Book your place [HERE](#)

☆ **Meal Time Assistant Training** | Thursday 14 November | 0930 - 1100 | Countess Wear Community School, Exeter | ECSA

Book your place [HERE](#)

☆ **Positive interactions - scaffolding learning in co-play** | Thursday 21 November | 1000 - 1130 | Online | ECSA

Book your place [HERE](#)

☆ **Lego Therapy Workshop** | Thursday 28 November | 0930 - 1130 | Countess Wear Community School, Exeter | ECSA

Book your place [HERE](#)

CROSSPHASE

☆ **Advanced Coaching Programme for School Leaders** | Wednesday 25 September | 0930 - 1600 | Countess Wear Community School, Exeter | ECSA

Book your place [HERE](#)

☆ **Safeguarding Level 3 Refresher** | Thursday 26 September | 0930 - 1630 | Roundswell Community Primary Academy | Tarka

Book your place [HERE](#)

☆ **Passive Intervention and Prevention Strategies (PIPS) Training** | Tuesday 1 October | 0900 - 1600 | Countess Wear Community School, Exeter | ECSA

Book your place [HERE](#)

☆ **'12 Dialogues for Boys & Young Men' Being Safe & Safe to be Around** | Friday 4 October | 0900 - 1515 | Oldway Primary School | RTSA

Book your place [HERE](#)

☆ **Makaton Taster Course** | Wednesday 9 October | 1000 - 1200 | Countess Wear Community School, Exeter | ECSA

Book your place [HERE](#)

☆ **TA Training: Building healthy brains for learning & improved outcomes!** | Friday 11 October | 1000 - 1130 | Online | ECSA

Book your place [HERE](#)

★ TA Training: Supporting pupils with SEND | Thursday 17 October | 0930 - 1500 | Countess Wear Community School, Exeter | ECSA
Book your place [HERE](#)

★ Safeguarding Level 3 Initial (2 Day) | Thursday 17 & Friday 18 October | 0930 - 1630 | Roundswell Community Primary Academy | Tarka
Book your place [HERE](#)

★ Teach Like a Champion | Starts Tuesday 5 November | 1600 - 1730 | Online | Blackdown EP
Book your place [HERE](#)

★ Two Day Paediatric First Aid | Tuesday 19 & Wednesday 20 November | 0930 - 1600 | Countess Wear Community School, Exeter | ECSA
Book your place [HERE](#)

★ Passive Intervention and Prevention Strategies (PIPS) Training | Thursday 21 November | 0915 - 1600 | Roundswell Community Primary Academy | Tarka
Book your place [HERE](#)

SECONDARY

★ AQA Writing for GCSE English Language Paper 1 & 2 | Tuesday 5 November | 1000 - 1500 | Oldway Primary School | RTSA
Book your place [HERE](#)

Professional Communities

- School Business Management Professional Community | Thursday 3 October | 1100 - 1300 | Online | ECSA
Book your place [HERE](#)
- Secondary Computing Professional Community | Thursday 3 October | 1600 - 1730 | Online | ECSA
Book your place [HERE](#)
- Primary Oracy Professional Community | Monday 7 October | 1600 - 1700 | Online | Tarka
Book your place [HERE](#)
- Primary Languages Professional Community | Tuesday 8 October | 1545 - 1715 | Online | RTSA
Book your place [HERE](#)
- Primary SEND Professional Community | Thursday 10 October | 0845 - 1200 | Future Skills Centre, Exeter | ECSA
Book your place [HERE](#)
- Primary Art Professional Community | Thursday 10 October | 1330 - 1530 | Countess Wear Community School | ECSA
Book your place [HERE](#)
- Equality & Diversity Professional Community | Tuesday 15 October | 1430 - 1600 | Countess Wear Community School | ECSA
Book your place [HERE](#)
- Estates Management Professional Community | Thursday 17 October | 1100 - 1300 | Online | ECSA
Book your place [HERE](#)
- Primary Design & Technology Professional Community | Thursday 7 November | 1600 - 1700 | Online | Tarka
Book your place [HERE](#)
- Primary Character Education Professional Community | Thursday 7 November | 1600 - 1700 | Online | Tarka
Book your place [HERE](#)

- **RE Professional Community | Thursday 7 November | 1600 - 1730 | Online | ECSA**
Book your place [HERE](#)
- **PSHE Professional Community | Tuesday 12 November | 1330 - 1530 | Countess Wear Community School, Exeter | ECSA**
Book your place [HERE](#)
- **Safeguarding Professional Community | Wednesday 13 November | 1600 - 1700 | Online | Tarka**
Book your place [HERE](#)
- **Primary Geography & History Professional Community | Thursday 14 November | 1600 - 1700 | Online | Tarka**
Book your place [HERE](#)
- **Primary Curriculum & Assessment Professional Community | Monday 25 November | 1600 - 1700 | Online | Tarka**
Book your place [HERE](#)

Other Events for your Diary

'Once Upon a Time' Oracy Festival

- **Inspiring story-led creativity in the classroom – Thursday 26 September 2024**
Find more information [HERE](#)

Ilsham English Hub

- **Various CPD opportunities**
Find more information [HERE](#)

Exeter Maths School – Teach Computing

- **Various CPD opportunities**
Find more information [HERE](#)

Empowering Early Years CPD

- **Various CPD opportunities**
Find more information [HERE](#)

Please note our events are booking through our [website](#) and [Eventbrite](#)

SWIFT Partnership is sponsored by:



www.sw-ift.org.uk

