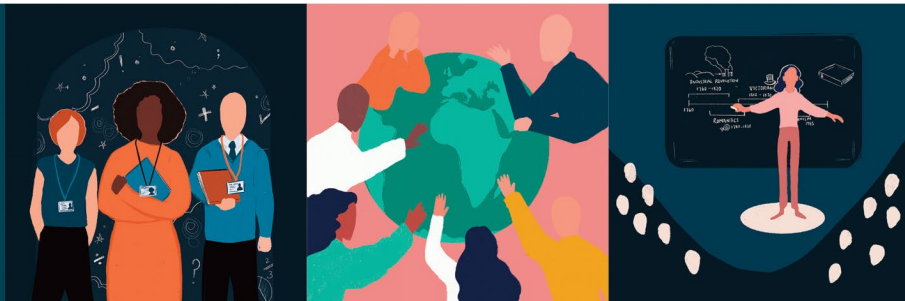




Events



ISSUE 6

Thursday 28 November 2024
Autumn Term Issue

Continuing Professional Development Offers from SWIFT & Our Partners

High quality CPD at affordable rates to enhance professional development in your school.
Access through your SWIFT Membership package at no charge and/or discounted rates.
Or as a non-member, you can access the programmes on a pay-as-you-go basis.

[YOU CAN READ HERE TO FIND OUT MORE ABOUT UPCOMING EVENTS AND THANK YOU FOR FORWARDING TO YOUR COLLEAGUES](#)

Leading Effective Disadvantage Provision for Primary School Pupils

Starts Monday 20 January 2025, 0930 - 1500, Oldway Primary School

The programme will support effective planning for disadvantaged pupils in primary schools, showing how to measure the impact of strategies but also in knowing what to stop doing. Marc Rowland will share his expertise to teach and empower participants, also presenting on social isolation and focusing on what strong leadership of school culture and expectations can look like as a key in unlocking better outcomes.

Meaningful participation is vital for improved outcomes and this programme offers not only a face-to-face session at RTSA Adult Learning Centre but three additional online sessions, the final one underpinned by a strong and useful evaluation and gap task to strengthen strategic planning moving forward.

Trainer

Marc Rowland has published numerous articles and books on addressing educational disadvantage. He has carried out a number of area-based studies focused on improving educational disadvantage and has helped over a thousand schools. Marc has provided support to the DfE on the use and impact of the pupil premium grant and led the introduction of Jersey pupil premium.

Target Audience

Leadership Teams, SENDCo's DSLs, Pastoral Leaders

Dates

Day 1 - Monday 20 January 2025, 0930-1500 - F2F, Oldway Primary School
Day 2 - Wednesday 19 March 2025, 1530-1700, Online
Day 3 - Tuesday 24 June 2025, 1530-1700, Online
Day 4 - Tuesday 8 July 2025, 1530-700, Online

Cost: £175 per person for SWIFT member schools | £195 per person for non-member schools.

Contact us

If you have any questions, please contact

Kylie.waters@sw-ift.org.uk



REGISTER [HERE](#)

Understanding Communication - Friendly Practices & Provision in EYFS

Thursday 5 December 2024, 1330 - 1500, Online

This course explores how to foster key communication skills in the Early Years Foundation Stage (EYFS) through tailored, communication-rich environments. Participants will learn how to adapt general pedagogical practices to create inclusive and opportunity-rich settings that value the unique needs of diverse cohorts. The session will focus on practical strategies to elicit effective communication and provide environments that enable young children to thrive.

Please note: the session will be recorded for those who are unable to attend live.

Trainer

Hannah O'Donnell is an Early Years Teacher (EYTS) with a Distinction-level Masters (MA) in Early Years, a PG Dip, and a Psychology degree from Exeter University. She has over 10 years of experience in Early Years education and is deeply passionate about supporting research-based, excellent practices to enhance outcomes for young children.

Since 2016, Hannah has run Empowering Early Years CPD training, delivering online and in-person sessions for schools, multi-academy trusts (MATs), ITT providers, and early years settings. Her training focuses on improving educators' knowledge, reflexivity, and practice to foster thriving, learning environments for children.

Hannah is also an Associate Lecturer and Tutor, with six years' experience teaching FdA and BA (Hons) degrees in Early Childhood, as well as supervising BA dissertations. In 2023, she was named Lecturer of the Year by her students.

Cost: £35 per person for SWIFT member schools | £55 per person for non-member schools.

Contact us

If you have any questions, please contact

robin.scott@sw-ift.org.uk



REGISTER [HERE](#)

FREE Support for Pupil Premium Key Stage 2 Pupils

We are pleased announce an exciting opportunity to provide direct support for Key Stage 2 Pupil Premium (PP) pupils in your school.

Atom Learning, The Colyton Foundation and SWIFT are working together in a positive partnership to provide **FREE** access to Atom Home to pupils across Cornwall, Devon, Dorset and Somerset primary schools.

This responsive online learning platform is proven to successfully support attainment through tailored support that builds confidence, strengthens knowledge, and prepares children for the transition to secondary education.

Benefits for your pupils

- Tailored Learning | Atom Home adapts to each child's learning level, ensuring they receive the right support for their individual needs.
- Key Stage 2 Focus | The platform covers all essential content in English, Maths, and Science, supporting your efforts to raise attainment.
- Comprehensive Resources | Pupils will have access to an extensive library of teacher-created practice questions, learning challenges, and resources to support their mastery of the curriculum.

FIND MORE INFORMATION [HERE](#)

Outstanding Curriculum Design for Primary Languages Programme

Starts Monday 20 January 2025 | 1530 - 1700 | Online

Join us for a deep dive into creating awesome primary language programme focusing on confident creative culturally rich communication.

- Session 1 - Curriculum Design Part 1 (Monday 20 January 2025)
- Session 2 - Curriculum Design Part 2 (Wednesday 26 February 2025)
- Session 3 - Decolonising and diversifying the PMFL curriculum (Tuesday 25 March 2025)
- Session 4 - Deep dives and deep learning in the PMFL curriculum (Tuesday 20 May 2025)
- Session 5 - Curriculum Design & Pedagogy Part 3 (Tuesday 17 June 2025)

By the end of the programme, you will be able to:

- sequence a PMFL curriculum that finds the 'sweet spot' where high-frequency vocabulary, phonics and grammar lead to confident, creative communication in culturally-rich contexts.
- take inspiration from rich practice activities that represent all learners and at the same time stir up their curiosity about and appreciation of other people and cultures.
- describe your language vision and practice for external stakeholders.

Target Audience

Primary MFL Teachers and Leaders

Cost: £125 per delegate for SWIFT member schools | £185 for non-members.

Contact us

If you have any questions, please contact

Kylie.waters@sw-ift.org.uk



REGISTER [HERE](#)

TA Training: New to the role of Teaching Assistant

Thursday 23 January 2025, 1230 – 1500, Countess Wear Community School Exeter

This training will seek to explore the fundamentals of the role of being a teaching assistant. Through a combination of presentation and small group discussion we will look to consider how we can make a difference to the learning and outcomes for those in our care.

We will look and discuss the motivations behind behaviours we may see in school and what might be happening in a child's brain when we are asked to support them. We will consider some practical strategies to manage pupils behaviour positively as well as looking at how we can keep our own mental health healthy by building our own resilience.

About the Trainer

Lucy Herring is Senior Leader of Education, an experienced primary school educator undertaking a range of roles including class teacher, SENCO and school senior leader. Lucy has a particular interest in the barriers to learning faced by vulnerable and disadvantaged learners. Lucy is the Early Years Subject Lead for the Exeter Consortium teacher training programme and also supports teacher trainees in schools as a Lead Mentor. Lucy is passionate about offering a high-quality of education to all children and young people.

Cost: £50 per person for SWIFT member schools | £80 for Non-members.

FIND MORE INFORMATION [HERE](#)

Professional Communities

Professional Communities bring colleagues together to network, connect with leading practice, hear from expert speakers, and provide mutual support. Held termly, our team of Professional Community Leads provide a high level of expertise, enabling the design of high-quality agendas, recruitment of expert speakers and the identification of local expertise. Contributors include leading national voices and key officials from national agencies, including Ofsted and researchers from the Education Endowment Fund (EEF).



- School Business Management
- Primary Oracy
- Primary Languages
- Primary SEND
- Primary Art
- Equality & Diversity
- Estates Management
- Primary Design & Technology
- Primary Character Education
- RE
- PSHE
- Safeguarding
- Primary Geography & History
- Secondary Computing
- Secondary Geography
- Primary Curriculum & Assessment

FIND MORE INFORMATION [HERE](#)

Primary Subject Leader Briefings

Early Years, Maths and English Subject Leader Briefings for primaries are designed to provide termly updates, guidance and examples of effective practice, drawing on area and national sources. Briefings are delivered by experts and planned in co-ordination with our Subject Masterclasses and Professional Communities.



- Early Years with Phil Armstrong | Early Excellence
- English with Danni Cooke | Ilsham English Hub Lead
- Maths with Josh Lury | CODE Maths Hub

No charge for SWIFT members.

FIND MORE INFORMATION [HERE](#)

The Laurel Trust - Funding available for innovative school-based projects

The Laurel Trust is offering schools in all phases, including early years and special schools/settings, an opportunity to apply for funding. The proposed research must focus on improving the life chances for children and young people from educationally disadvantaged backgrounds. The theme of this year's research is Effective Transitions: educational readiness for every child at every phase.

The grants are designed to support groups of schools to work together to re-imagine education in our current world, and to place emphasis on a culture rooted in emotional and academic resilience.

This opportunity to apply for grant funding closes on **28 February 2025**. For schools who are considering making an application, online briefings offer an opportunity to learn more about The Laurel Trust, ask questions and, most importantly, to receive some guidance on making your application.

There will be four online briefings on January 14, January 15, January 16, January 21 2025. All briefings will start at 11am.

To apply to join a meeting please email our Chair of Trustees:
billgoddard11@gmail.com

FIND MORE INFORMATION [HERE](#)

Upcoming Events - December 2024 & January 2025

EYFS & PRIMARY

★ **TA Training: Building secure attachments** | Wednesday 4 December | 1330 - 1500 | Online | ECSA

Book your place [HERE](#)

★ **Understanding communication - friendly practices & provision in EYFS** | Thursday 5 December | 1330 - 1500 | Online | ECSA

Book your place [HERE](#)

★ **Early Years Subject Briefing** | Thursday 9 January | 0930 - 1530 | Online | ECSA

Book your place [HERE](#)

★ **Using loose parts to elevate imagination and language development** | Thursday 16 January | 1300 - 1600 | Countess Wear Community School, Exeter | ECSA

Book your place [HERE](#)

★ **Primary English Subject Leader Briefing** | Thursday 16 January | 1300 - 1500 | Online | Tarka

Book your place [HERE](#)

★ **Leading Effective Disadvantage Provision for Primary School Pupils** | Monday 20 January | 0930 - 1500 | Oldway Primary School | RTSA

Book your place [HERE](#)

★ **Outstanding Curriculum Design for Primary Languages Programme** | Monday 20 January | 1530 - 1700 | Online | RTSA

Book your place [HERE](#)

★ **Role of physical skill enabling environments to enhance reading & writing** | Wednesday 22 January | 1000 - 1130 | Online | ECSA

Book your place [HERE](#)

★ **TA Training: New to the role of Teaching Assistant** | Thursday 23 January | 1230 - 1500 | Countess Wear Community School | ECSA

Book your place [HERE](#)

CROSSPHASE

★ **Inclusion of growth mindset concepts in Early Years practice & provision** | Friday 31 January | 1000 - 1130 | Online | ECSA

Book your place [HERE](#)

SECONDARY

★ **Leading Effective Disadvantage Provision for Secondary School Pupils** | Tuesday 21 January | 0930 - 1500 | Oldway Primary School | RTSA

Book your place [HERE](#)

Professional Communities

- **Primary Computing Professional Community** | Wednesday 4 December | 1600 - 1730 | Online | ECSA
Book your place [HERE](#)
- **Primary Geography & History Professional Community** | Thursday 5 December | 1600 - 1700 | Online | Tarka
Book your place [HERE](#)
- **Equality & Diversity Professional Community** | Tuesday 28 January | 1430 - 1600 | Online | ECSA

Book your place [HERE](#)

- **Primary SEND Professional Community | Thursday 30 January | 0845 - 1200 | Future Skills Centre, Exeter | ECSA**
[Book your place HERE](#)
- **Primary Art Professional Community | Thursday 30 January | 1330 - 1530 | Countess Wear Community School | ECSA**
[Book your place HERE](#)

Other Events for your Diary

Ilsham English Hub

- **Ilsham English Hub Conference – 31 January 2025**
[Find more information HERE](#)

Empowering Early Years CPD

- **Various CPD opportunities**
[Find more information HERE](#)

Cambridge Nationals CPD

- **Various CPD opportunities**
[Find more information HERE](#)

1-2-1 Learning

- **SEMH in Education Conference – Thursday 6 February 2025**
[Find more information HERE](#)

The Cornerstone English Hub and the Devon and Dorset Computing Hub

- **Various CPD opportunities**
[Find more information HERE](#)

Please note our events are booking through our [website](#) and [Eventbrite](#)

SWIFT Partnership is sponsored by:



www.sw-ift.org.uk

