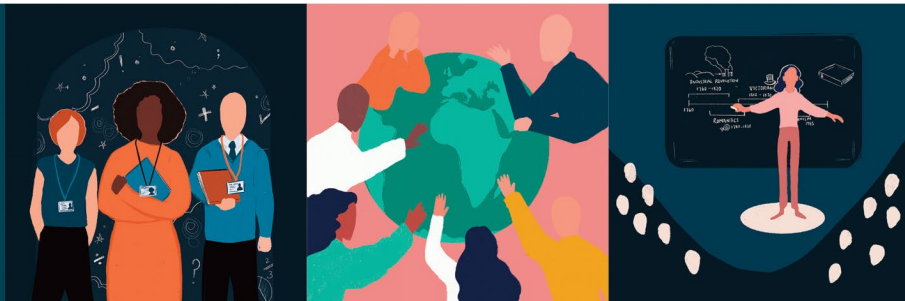




Events



ISSUE 8

Thursday 16 January 2025
Spring Term Issue

Continuing Professional Development Offers from SWIFT & Our Partners

High quality CPD at affordable rates to enhance professional development in your school.
Access through your SWIFT Membership package at no charge and/or discounted rates.
Or as a non-member, you can access the programmes on a pay-as-you-go basis.

YOU CAN READ HERE TO FIND OUT MORE ABOUT UPCOMING EVENTS AND THANK YOU FOR FORWARDING TO YOUR COLLEAGUES

Ensuring an Ambitious Curriculum for Early Years Pupils

Tuesday 4 February 2025, 1230 - 1530, Oldway Primary School

With the focus on EYFS in school inspection, it is important that EYFS teachers have a 'top level view' of their curriculum, which can be confidently shared with others, including subject leaders.

This half day session will support you to consider how areas of learning fit into whole school curriculum planning, ensuring progression from early years into Key stage one.

The session will particularly consider how 'Understanding the World' feeds into Humanities.

Target Audience

Early Years Teachers and ECTs

Learning Outcomes

By the end of the session, you will be able to:

- Talk to subject leaders about the EYFS curriculum
- Understand how learning in the EYFS can be built upon in later key stages
- Consider the place of EYFS learning and development, within the context of whole school curriculum planning

Contact us

If you have any questions, please contact

kylie.waters@sw-ift.org.uk



Teaching & Learning

Cost: SWIFT Members: £55, Other colleagues: £85

REGISTER [HERE](#)

Supporting Children with ASD and High Anxiety

Thursday 4 February 2025, 0930 - 1230, Countess Wear Community School, Exeter

Many young people on the autistic spectrum also experience high levels of anxiety which can present as a barrier to learning. High levels of anxiety can greatly impact on accessing educational settings, despite a child being very academically able.

This course will aim to explain the causes of autism related anxiety, and how anxiety is expressed. It will aim to share experiences of supporting a child with high levels of anxiety and provide strategies for supporting a child through their anxieties.

Trainer

Lisa McCullagh has over 20 years' experience in the field of Autism and is a parent of a young person diagnosed with Asperger's syndrome. Lisa has a BA Honours degree 1st Class in Childhood and Youth Studies (Open University) and a Post Graduate Diploma and Certificate in Autism from the University of Birmingham. In addition, she has attended numerous training workshops including P.E.C.S. (Picture Exchange Communication System), social stories and the use of visual prompts, sensory processing difficulties, managing anxiety and sexual understanding.

Lisa has worked with young people on the spectrum in a variety of settings including education, social care and the local community. She provides training and advisory services to a range of professionals for the education and care sector.

Cost: £50 per person for SWIFT member schools | £80 per person for non-member schools.

Contact us

If you have any questions, please contact

robin.scott@sw-ift.org.uk



REGISTER [HERE](#)

FREE Support for Pupil Premium Key Stage 2 Pupils

We are pleased announce an exciting opportunity to provide direct support for Key Stage 2 Pupil Premium (PP) pupils in your school.

Atom Learning, The Colyton Foundation and SWIFT are working together in a positive partnership to provide **FREE** access to Atom Home to pupils across Cornwall, Devon, Dorset and Somerset primary schools.

This responsive online learning platform is proven to successfully support attainment through tailored support that builds confidence, strengthens knowledge, and prepares children for the transition to secondary education.

Benefits for your pupils

- Tailored Learning | Atom Home adapts to each child's learning level, ensuring they receive the right support for their individual needs.
- Key Stage 2 Focus | The platform covers all essential content in English, Maths, and Science, supporting your efforts to raise attainment.
- Comprehensive Resources | Pupils will have access to an extensive library of teacher-created practice questions, learning challenges, and resources to support their mastery of the curriculum.

FIND MORE INFORMATION [HERE](#)

Good NPQ News to ring in the New Year!

Reformed NPQs are now well-established as the successful and proven path for professional development of leaders at all levels. For many schools and Trusts, they are a key outcome of annual progress and development discussions with an allowance of funding built into annual budgets. In short, they are becoming an entitlement for staff.

So, the [DfE](#) announcement at the end of December that scholarship funding is being repeated for cohort 4b Spring 2025, is very welcome. The basis is the same as for the Autumn 2024 cohort:

- 1. Scholarships for all schools for:**
 - NPQ in Leading Primary Maths
 - NPQ SENCO
 - NPQ in Headship
- 2. Scholarships for all other NPQs for schools in the top 50% that have the highest proportion of pupil premium pupils**
- 3. Scholarships places are limited and eligibility for scholarship funding does not guarantee a place on a funded NPQ course**

As you will be aware, SWIFT offers NPQs through their partner, [Leading Schools South West](#) (LSSW). We have received a generous allocation of funding because [LSSW](#) is a trusted partner of NIoT and Teach First. Demand will be greater than supply, so you are not guaranteed a scholarship. **Apply early through the [LSSW website](#) to maximise your chances.** Places will be unlimited **if you are funded by your school.**

Below we outline the lead provider programmes and more information is available [HERE](#):

Teach First Programmes April 2025	NIoT Programmes April 2025
❖ NPQ in Executive Leadership	❖ NPQ in Headship
❖ NPQ in Early Years Leadership	❖ Early Headship Coaching Offer
❖ NPQ in Senior Leadership	❖ NPQ for SENCO
❖ NPQ in Leading Literacy	❖ NPQ in Leading Behaviour and Culture
❖ NPQ in Leading Primary Maths	❖ NPQ in Leading Teaching
❖ NPQ in Leading Teacher Development	

Thank you as always for your continued support of our NPQ programmes and we look forward to reviewing the applications for the Spring 2025 cohort.

Contact

Fiona McNeile, Teaching School Hub Manager - fiona.mcneile@sw-ift.org.uk

FIND MORE INFORMATION [HERE](#)

Professional Communities

Professional Communities bring colleagues together to network, connect with leading practice, hear from expert speakers, and provide mutual support. Held termly, our team of Professional Community Leads provide a high level of expertise, enabling the design of high-quality agendas, recruitment of expert speakers and the identification of local expertise. Contributors include leading national voices and key officials from national agencies, including Ofsted and researchers from the Education Endowment Fund (EEF).



- School Business Management
- Primary Oracy
- Primary Languages
- Primary SEND
- Primary Art
- Equality & Diversity
- Estates Management
- Primary Design & Technology
- Primary Character Education
- RE
- PSHE
- Safeguarding
- Primary Geography & History
- Secondary Computing
- Secondary Geography
- Primary Curriculum & Assessment

FIND MORE INFORMATION [HERE](#)

Primary Subject Leader Briefings

Early Years, Maths and English Subject Leader Briefings for primaries are designed to provide termly updates, guidance and examples of effective practice, drawing on area and national sources. Briefings are delivered by experts and planned in co-ordination with our Subject Masterclasses and Professional Communities.



- Early Years with Phil Armstrong | Early Excellence
- English with Danni Cooke | Ilsham English Hub Lead
- Maths with Josh Lury | CODE Maths Hub

No charge for SWIFT members.

FIND MORE INFORMATION [HERE](#)

Upcoming Events - January to March 2025

EYFS & PRIMARY

★ **Outstanding Curriculum Design for Primary Languages Programme | Monday 20 January | 1530 - 1700 | Online | RTSA**

Book your place [HERE](#)

★ **Inclusion of growth mindset concepts in Early Years practice & provision | Friday 31 January | 1000 - 1130 | Online | ECSA**

Book your place [HERE](#)

★ **Ensuring an Ambitious Curriculum for Early Years Pupils | Tuesday 4 February | 1230 - 1530 | Oldway Primary School | RTSA**

Book your place [HERE](#)

★ **Moderation for Nursery Teachers | Wednesday 12 February | 1230 - 1530 | Oldway Primary School | RTSA**

Book your place [HERE](#)

★ **Planning for and delivering progression in Primary Art | Thursday 6 March | 1300 - 1500 | Countess Wear Community School | ECSA**

Book your place [HERE](#)

★ **Getting Gross Motor Going | Monday 10 March | 1300 - 1500 | Online | ECSA**

Book your place [HERE](#)

☆ **KS2 Cross-School Writing Moderation | Wednesday 12 March | 1315 - 1530 | Oldway Primary School | RTSA**

Book your place [HERE](#)

☆ **Early Years - Spring Term Cross-School Moderation | Friday 14 March | 1230 - 1530 | Oldway Primary School | RTSA**

Book your place [HERE](#)

☆ **Writing Moderation: Year 3 (Exeter) | Tuesday 18 March | 0900 - 1200 | Countess Wear Community School | ECSA**

Book your place [HERE](#)

☆ **Writing Moderation: Year 1 (Exeter) | Tuesday 18 March | 1300 - 1600 | Countess Wear Community School | ECSA**

Book your place [HERE](#)

☆ **Understanding sensory play opportunities to enhance early maths concepts | Wednesday 19 March | 1330 - 1530 | Online | ECSA**

Book your place [HERE](#)

☆ **Primary Maths Subject Leader Briefing | Wednesday 19 March | 1300 - 1600 | Online | RTSA**

Book your place [HERE](#)

☆ **Writing Moderation: Year 5 (Exeter) | Thursday 20 March | 0900 - 1200 | Countess Wear Community School | ECSA**

Book your place [HERE](#)

☆ **Writing Moderation: Year 4 (Exeter) | Thursday 20 March | 1300 - 1600 | Countess Wear Community School | ECSA**

Book your place [HERE](#)

☆ **Primary Science Subject Leader Briefing | Wednesday 26 March | 1300 - 1600 | Online | RTSA**

Book your place [HERE](#)

☆ **Emotional Intelligence skills to boost learning, resilience & perseverance | Wednesday 26 March | 1330 - 1500 | Online | RTSA**

Book your place [HERE](#)

SECONDARY

☆ **Outstanding Curriculum Design for Secondary Languages Programme | Monday 3 February | 1530 - 1700 | Online | RTSA**

Book your place [HERE](#)

☆ **AQA Writing for GCSE English Language Reaching Grade 7-9 | Tuesday 4 March | 1000 - 1500 | Oldway Primary School | RTSA**

Book your place [HERE](#)

CROSSPHASE

☆ **TA Training: New to the role of Teaching Assistant | Thursday 23 January | 1230 - 1500 | Countess Wear Community School | ECSA**

Book your place [HERE](#)

☆ **Supporting Children with ASD and High Anxiety | Tuesday 4 February | 0930 - 1230 | Countess Wear Community School | ECSA**

Book your place [HERE](#)

☆ **TA Training: Building healthy brains for learning & improved outcomes! | Friday 28 February | 1000 - 1130 | Online | ECSA**

Book your place [HERE](#)

☆ **TA Training: Being the Difference | Monday 3 March | 1300 - 1600 | Countess Wear Community School | ECSA**

Book your place [HERE](#)

☆ **Supporting Defensive or Pathologically Demand Avoidant Learners | Tuesday 4 March | 0930 - 1130 | Countess Wear Community School | ECSA**

Book your place [HERE](#)

☆ **Coaching for Leaders | Wednesday 5 March | 0930 - 1530 | Countess Wear Community School | ECSA**

Book your place [HERE](#)

★ **Planning Lessons for Pupils with Dyscalculia** | Friday 7 March | 1300 - 1530 | Oldway Primary School | RTSA
Book your place [HERE](#)

★ **Passive Intervention and Prevention Strategies (PIPS) Training** | Tuesday 11 March | 0900 - 1600 | Countess Wear Community School | ECSA
Book your place [HERE](#)

★ **TA Training: Understanding Self-Regulation Skills** | Wednesday 12 March | 1000 - 1130 | Online | ECSA
Book your place [HERE](#)

★ **Dyslexia - Supporting Struggling Readers & Spellers** | Friday 21 March | 1300 - 1530 | Oldway Primary School | RTSA
Book your place [HERE](#)

Professional Communities

- **Equality & Diversity Professional Community** | Tuesday 28 January | 1430 - 1600 | Online | ECSA
Book your place [HERE](#)
- **Primary Languages Professional Community** | Tuesday 28 January | 1545 - 1715 | Online | RTSA
Book your place [HERE](#)
- **Primary SEND Professional Community** | Thursday 30 January | 0845 - 1200 | Future Skills Centre, Exeter | ECSA
Book your place [HERE](#)
- **Primary Art Professional Community** | Thursday 30 January | 1330 - 1530 | Countess Wear Community School | ECSA
Book your place [HERE](#)
- **Secondary Curriculum, Assessment and Data Professional Community** | Monday 3 February | 0945 - 1200 | Uffculme School | BEP
Book your place [HERE](#)
- **School Business Management Professional Community** | Tuesday 11 February | 1300 - 1500 | Online | ECSA
Book your place [HERE](#)
- **MFL Professional Community** | Wednesday 12 February | 1545 - 1700 | Online | ECSA
Book your place [HERE](#)
- **Secondary Computing Professional Community** | Thursday 13 February | 1600 - 1730 | Online | ECSA
Book your place [HERE](#)
- **Primary Oracy Professional Community** | Wednesday 26 February | 1600 - 1700 | Online | Tarka
Book your place [HERE](#)
- **PSHE Professional Community** | Thursday 27 February | 1330 - 1530 | Countess Wear Community School | ECSA
Book your place [HERE](#)
- **Sixth Form Professional Community** | Wednesday 5 March | 1300 - 1700 | Buckfast Abbey Conference Centre | RTSA
Book your place [HERE](#)
- **Primary Design Technology Professional Community** | Thursday 6 March | 1600 - 1715 | Online | Tarka
Book your place [HERE](#)
- **Primary Music Professional Community** | Monday 10 March | 1600 - 1700 | Roundswell Community Primary Academy | Tarka
Book your place [HERE](#)
- **Estates Management Professional Community** | Tuesday 11 March | 1300 - 1500 | Online | ECSA
Book your place [HERE](#)

- **Primary Curriculum & Assessment Professional Community | Wednesday 12 March | 1600 - 1700 | Online | Tarka**
[Book your place HERE](#)
- **Primary Computing Professional Community | Wednesday 12 March | 1600 - 1730 | Online | ECSA**
[Book your place HERE](#)
- **Equality & Diversity Professional Community | Tuesday 25 March | 1430 - 1600 | Online | ECSA**
[Book your place HERE](#)

Other Events for your Diary

Ilsham English Hub

- **Ilsham English Hub Conference – 31 January 2025**
[Find more information HERE](#)
- **Various CPD opportunities**
[Find more information HERE](#)

Empowering Early Years CPD

- **Various CPD opportunities**
[Find more information HERE](#)

Cambridge Nationals CPD

- **Various CPD opportunities**
[Find more information HERE](#)

Kingsbridge Research School

- **Cognitive Research Mini Sessions**
[Find more information HERE](#)

The Cornerstone English Hub and the Devon and Dorset Computing Hub

- **Various CPD opportunities**
[Find more information HERE](#)

Please note our events are booking through our [website](#) and [Eventbrite](#)

SWIFT Partnership is sponsored by:

