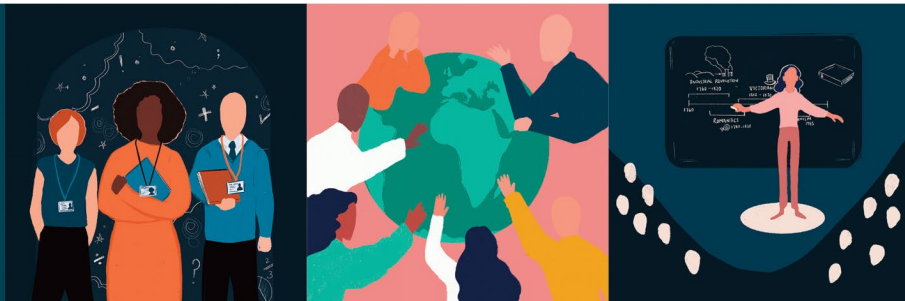




Events



ISSUE 9

Thursday 30 January 2025
Spring Term Issue

Continuing Professional Development Offers from SWIFT & Our Partners

High quality CPD at affordable rates to enhance professional development in your school.
Access through your SWIFT Membership package at no charge and/or discounted rates.
Or as a non-member, you can access the programmes on a pay-as-you-go basis.

[YOU CAN READ HERE TO FIND OUT MORE ABOUT UPCOMING EVENTS AND THANK YOU FOR FORWARDING TO YOUR COLLEAGUES](#)

SWIFT Spring Leadership Forum

Thursday 20 March 2025, 1530 - 1700, Online

Overview

Our keynote speaker - Peps Mccrea – will be presenting on ‘The Science of Motivation’. In this session, Peps will provide a framework of five big ideas from the evidence on motivation plus five key practical strategies we can use to boost attention and effort in the classroom and will include video footage of great teaching in action.

Peps is an award-winning teacher educator, designer and author. Founder of Evidence Snacks, Peps is also Director of Education at Steplab and author of the ultra-concise High Impact Teaching series.

In addition, SWIFT Executive Director – Martin Smith – will set out an ambitious SWIFT offer for next academic year and provide delegates with the opportunity to put forward their own requests for speakers and courses.

We are delighted that this event is sponsored by ONVU Learning.

We look forward to hopefully seeing you on the 20 March.

Save the date

The SWIFT Summer Conference on Thursday 19 June 2025 in-person at The Future Skills Centre, Exeter. Details will soon be made available.

**Cost: SWIFT Members and LSSW NPQs Programme Members | FREE
Other Colleagues | £35**

Contact us

If you have any questions, please contact

Jude.Baylis@sw-ift.org.uk



REGISTER [HERE](#)

Coaching for Leaders

Wednesday 5 March 2025, 0930 - 1530, Countess Wear Community School, Exeter

The Coaching for Leaders workshop will provide leaders and coaches with increased confidence in their coaching skills. We will reflect on the challenges and successes of coaching and enable participants to practice and receive feedback on their coaching style. We will explore a range of current and effective coaching tools to enhance the skill set of the coach. The workshop will also explore the skills associated with coaching and facilitating whole teams and how coaching can be used to engage colleagues, align goals, and provide a method to manage difficult conversations.

We will reflect on some current thought leadership in coaching practice, informed by up-to-date organisational research relating to the effectiveness of coaching in enhancing individual and team performance. This will include a consideration of coaching different and more challenging people, and how to identify and coach people with diverse strengths and capabilities within the team environment.

Trainer

Leonie Hurrell is an Educational enthusiast. At 24 Leonie became the youngest Deputy Headteacher in Dorset and went on to be a Headteacher for 8 years, before becoming an ILM Certified Leadership Coach. Leonie is passionate about learning and people development. Founder of The Thinking Academy, a company that provides coaching and ILM approved training solutions for schools.

Cost: £50 per person for SWIFT member schools | £80 per person for non-member schools.

Contact us

If you have any questions, please contact

robin.scott@sw-ift.org.uk



REGISTER [HERE](#)

AQA Writing for GCSE English Language Reaching Grade 7-9

Tuesday 4 March 2025, 1000 – 1500, Oldway Primary School, Paignton

This is an AQA course which will be delivered by experienced lead examiner Lance Hanson.

Course Description

This course will:

- focus on skills that students can use to improve performance and gain the highest marks
- explore how students cover AOs in exemplar responses
- provide you with a range of classroom activities to encourage independent thinking and learning skills to maximise your student's potential

Target Audience

All teachers of GCSE English Language and in particular Post 16 providers.

Costs

SWIFT Members: £175

Other colleagues: £195

FIND MORE INFORMATION [HERE](#)

Good NPQ News

Reformed NPQs are now well-established as the successful and proven path for professional development of leaders at all levels. For many schools and Trusts, they are a key outcome of annual progress and development discussions with an allowance of funding built into annual budgets. In short, they are becoming an entitlement for staff.

So, the [DfE](#) announcement at the end of December that scholarship funding is being repeated for cohort 4b Spring 2025, is very welcome. The basis is the same as for the Autumn 2024 cohort:

1. **Scholarships for all schools for:**
 - NPQ in Leading Primary Maths
 - NPQ SENCO
 - NPQ in Headship
2. **Scholarships for all other NPQs for schools in the top 50% that have the highest proportion of pupil premium pupils**
3. **Scholarships places are limited and eligibility for scholarship funding does not guarantee a place on a funded NPQ course**

As you will be aware, SWIFT offers NPQs through their partner, [Leading Schools South West](#) (LSSW). We have received a generous allocation of funding because [LSSW](#) is a trusted partner of NIoT and Teach First. Demand will be greater than supply, so you are not guaranteed a scholarship. **Apply early through the [LSSW website](#) to maximise your chances.** Places will be unlimited **if you are funded by your school.**

Below we outline the lead provider programmes and more information is available [HERE](#):

Teach First Programmes April 2025	NIoT Programmes April 2025
❖ NPQ in Executive Leadership	❖ NPQ in Headship
❖ NPQ in Early Years Leadership	❖ Early Headship Coaching Offer
❖ NPQ in Senior Leadership	❖ NPQ for SENCO
❖ NPQ in Leading Literacy	❖ NPQ in Leading Behaviour and Culture
❖ NPQ in Leading Primary Maths	❖ NPQ in Leading Teaching
❖ NPQ in Leading Teacher Development	

Thank you as always for your continued support of our NPQ programmes and we look forward to reviewing the applications for the Spring 2025 cohort.

Contact

Fiona McNeile, Teaching School Hub Manager - fiona.mcneile@sw-ift.org.uk

FIND MORE INFORMATION [HERE](#)

FREE Support for Pupil Premium Key Stage 2 Pupils

We are pleased announce an exciting opportunity to provide direct support for Key Stage 2 Pupil Premium (PP) pupils in your school.

Atom Learning, The Colyton Foundation and SWIFT are working together in a positive partnership to provide **FREE** access to Atom Home to pupils across Cornwall, Devon, Dorset and Somerset primary schools.

This responsive online learning platform is proven to successfully support attainment through tailored support that builds confidence, strengthens knowledge, and prepares children for the transition to secondary education.

FIND MORE INFORMATION [HERE](#)

Professional Communities

Professional Communities bring colleagues together to network, connect with leading practice, hear from expert speakers, and provide mutual support. Held termly, our team of Professional Community Leads provide a high level of expertise, enabling the design of high-quality agendas, recruitment of expert speakers and the identification of local expertise. Contributors include leading national voices and key officials from national agencies, including Ofsted and researchers from the Education Endowment Fund (EEF).



- School Business Management
- Primary Oracy
- Primary Languages
- Primary SEND
- Primary Art
- Equality & Diversity
- Estates Management
- Primary Design & Technology
- Primary Character Education
- RE
- PSHE
- Safeguarding
- Primary Geography & History
- Secondary Computing
- Secondary Geography
- Primary Curriculum & Assessment

FIND MORE INFORMATION [HERE](#)

Primary Subject Leader Briefings

Early Years, Maths and English Subject Leader Briefings for primaries are designed to provide termly updates, guidance and examples of effective practice, drawing on area and national sources. Briefings are delivered by experts and planned in co-ordination with our Subject Masterclasses and Professional Communities.



- Early Years with Phil Armstrong | Early Excellence
- English with Danni Cooke | Ilsham English Hub Lead
- Maths with Josh Lury | CODE Maths Hub

No charge for SWIFT members.

FIND MORE INFORMATION [HERE](#)

Upcoming Events – February and March 2025

EYFS & PRIMARY

☆ **Ensuring an Ambitious Curriculum for Early Years Pupils** | Tuesday 4 February | 1230 - 1530 | Oldway Primary School | RTSA

Book your place [HERE](#)

☆ **Moderation for Nursery Teachers** | Wednesday 12 February | 1230 - 1530 | Oldway Primary School | RTSA

Book your place [HERE](#)

☆ **Planning for and delivering progression in Primary Art** | Thursday 6 March | 1300 - 1500 | Countess Wear Community School | ECSA

Book your place [HERE](#)

☆ **Getting Gross Motor Going** | Monday 10 March | 1300 - 1500 | Online | ECSA

Book your place [HERE](#)

☆ **KS2 Cross-School Writing Moderation** | Wednesday 12 March | 1315 - 1530 | Oldway Primary School | RTSA

Book your place [HERE](#)

☆ **Early Years - Spring Term Cross-School Moderation** | Friday 14 March | 1230 - 1530 | Oldway Primary School | RTSA

Book your place [HERE](#)

☆ **Understanding sensory play opportunities to enhance early maths concepts | Wednesday 19 March | 1330 - 1530 | Online | ECSA**

Book your place [HERE](#)

☆ **Primary Maths Subject Leader Briefing | Wednesday 19 March | 1300 - 1600 | Online | RTSA**

Book your place [HERE](#)

☆ **Primary Science Subject Leader Briefing | Wednesday 26 March | 1300 - 1600 | Online | RTSA**

Book your place [HERE](#)

☆ **Emotional Intelligence skills to boost learning, resilience & perseverance | Wednesday 26 March | 1330 - 1500 | Online | RTSA**

Book your place [HERE](#)

SECONDARY

☆ **AQA Writing for GCSE English Language Reaching Grade 7-9 | Tuesday 4 March | 1000 - 1500 | Oldway Primary School | RTSA**

Book your place [HERE](#)

CROSSPHASE

☆ **TA Training: Building healthy brains for learning & improved outcomes! | Friday 28 February | 1000 - 1130 | Online | ECSA**

Book your place [HERE](#)

☆ **TA Training: Being the Difference | Monday 3 March | 1300 - 1600 | Countess Wear Community School | ECSA**

Book your place [HERE](#)

☆ **Supporting Defensive or Pathologically Demand Avoidant Learners | Tuesday 4 March | 0930 - 1130 | Countess Wear Community School | ECSA**

Book your place [HERE](#)

☆ **Coaching for Leaders | Wednesday 5 March | 0930 - 1530 | Countess Wear Community School | ECSA**

Book your place [HERE](#)

☆ **Planning Lessons for Pupils with Dyscalculia | Friday 7 March | 1300 - 1530 | Oldway Primary School | RTSA**

Book your place [HERE](#)

☆ **Passive Intervention and Prevention Strategies (PIPS) Training | Tuesday 11 March | 0900 - 1600 | Countess Wear Community School | ECSA**

Book your place [HERE](#)

☆ **TA Training: Understanding Self-Regulation Skills | Wednesday 12 March | 1000 - 1130 | Online | ECSA**

Book your place [HERE](#)

☆ **Spring Leadership Forum | Thursday 20 March | 1530 - 1700 | Online | SWIFT**

Book your place [HERE](#)

☆ **Dyslexia - Supporting Struggling Readers & Spellers | Friday 21 March | 1300 - 1530 | Oldway Primary School | RTSA**

Book your place [HERE](#)

Professional Communities

- **Secondary Curriculum, Assessment and Data Professional Community | Monday 3 February | 0945 - 1200 | Uffculme School | BEP**
Book your place [HERE](#)
- **School Business Management Professional Community | Tuesday 11 February | 1300 - 1500 | Online | ECSA**
Book your place [HERE](#)

- **MFL Professional Community | Wednesday 12 February | 1545 - 1700 | Online | ECSA**
Book your place [HERE](#)
- **Secondary Computing Professional Community | Thursday 13 February | 1600 - 1730 | Online | ECSA**
Book your place [HERE](#)
- **Primary Oracy Professional Community | Wednesday 26 February | 1600 - 1700 | Online | Tarka**
Book your place [HERE](#)
- **PSHE Professional Community | Thursday 27 February | 1330 - 1530 | Countess Wear Community School | ECSA**
Book your place [HERE](#)
- **Sixth Form Professional Community | Wednesday 5 March | 1300 - 1700 | Buckfast Abbey Conference Centre | RTSA**
Book your place [HERE](#)
- **Primary Design Technology Professional Community | Thursday 6 March | 1600 - 1715 | Online | Tarka**
Book your place [HERE](#)
- **Primary Music Professional Community | Monday 10 March | 1600 - 1700 | Roundswell Community Primary Academy | Tarka**
Book your place [HERE](#)
- **Estates Management Professional Community | Tuesday 11 March | 1300 - 1500 | Online | ECSA**
Book your place [HERE](#)
- **Primary Curriculum & Assessment Professional Community | Wednesday 12 March | 1600 - 1700 | Online | Tarka**
Book your place [HERE](#)
- **Primary Computing Professional Community | Wednesday 12 March | 1600 - 1730 | Online | ECSA**
Book your place [HERE](#)
- **Primary Languages Professional Community | Tuesday 25 March | 1600 - 1700 | Online | RTSA**
Book your place [HERE](#)

Other Events for your Diary

Ilisham English Hub

- **Various CPD opportunities**
Find more information [HERE](#)

Empowering Early Years CPD

- **Various CPD opportunities**
Find more information [HERE](#)

Cambridge Nationals CPD

- **Various CPD opportunities**
Find more information [HERE](#)

Kingsbridge Research School

- **Cognitive Research Mini Sessions**
Find more information [HERE](#)

The Cornerstone English Hub and the Devon and Dorset Computing Hub

- **Various CPD opportunities**
Find more information [HERE](#)

Please note our events are booking through our [website](#) and [Eventbrite](#)

SWIFT Partnership is sponsored by:

