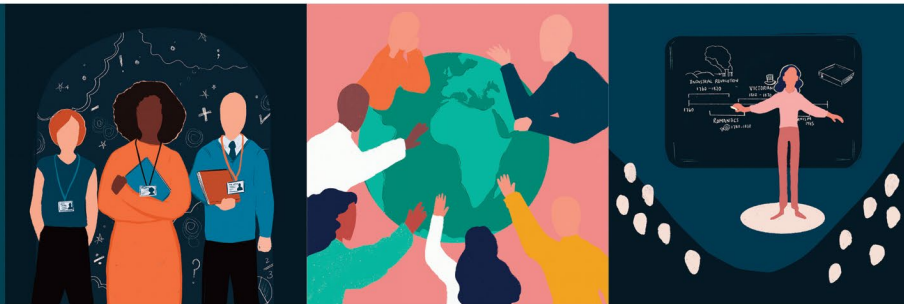




Events



ISSUE 10

Thursday 27 February 2025
Spring Term Issue

Continuing Professional Development Offers from SWIFT & Our Partners

High quality CPD at affordable rates to enhance professional development in your school.
Access through your SWIFT Membership package at no charge and/or discounted rates.
Or as a non-member, you can access the programmes on a pay-as-you-go basis.

YOU CAN READ HERE TO FIND OUT MORE ABOUT UPCOMING EVENTS AND THANK YOU FOR FORWARDING TO YOUR COLLEAGUES

SWIFT Spring Leadership Forum

Thursday 20 March 2025, 1530 - 1700, Online

Overview

Our keynote speaker - Peps Mccrea – will be presenting on ‘The Science of Motivation’. In this session, Peps will provide a framework of five big ideas from the evidence on motivation plus five key practical strategies we can use to boost attention and effort in the classroom and will include video footage of great teaching in action.

Peps is an award-winning teacher educator, designer and author. Founder of Evidence Snacks, Peps is also Director of Education at Steplab and author of the ultra-concise High Impact Teaching series.

In addition, SWIFT Executive Director – Martin Smith – will set out an ambitious SWIFT offer for next academic year and provide delegates with the opportunity to put forward their own requests for speakers and courses.

We are delighted that this event is sponsored by ONVU Learning.

We look forward to hopefully seeing you on the 20 March.

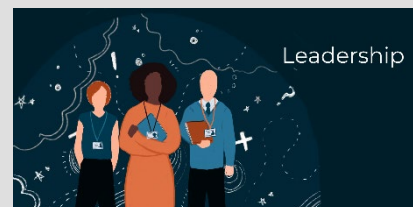
Save the date

The SWIFT Summer Conference on Thursday 19 June 2025 in-person at The Future Skills Centre, Exeter. See the details below.

Contact us

If you have any questions, please contact

Jude.Baylis@sw-ift.org.uk



**Cost: SWIFT Members and LSSW NPQs Programme Members | FREE
Other Colleagues | £35**

REGISTER [HERE](#)

SWIFT Summer Conference 2025

Thursday 19 June 2025, 0830 - 1545, Future Skills Centre Exeter

We are delighted to invite you to the **SWIFT Summer Conference 2025 (#SWIFTConf25)**, taking place on Thursday 19 June 2025 at Future Skills Centre, Exeter. This year, we are proud to welcome an outstanding line-up of speakers, including:

- Dan Fitzpatrick | The AI Educator and author | The power of AI and how to lead.
- Lauren Rowles MBE | Paralympic rowing champion & inspirational speaker | Mental Resilience and Facing Adversity.
- Professor Rob Coe | Senior Associate, Education Endowment Foundation | What makes the biggest impact on pupil outcomes?
- Bennie Kara | Co-Founder of Diverse Educators and author | Embedding Diversity in the Curriculum.
- Cassie Buchanan OBE | CEO of The Charter Schools Educational Trust | Trust Leadership.
- Jessica Trahar | Deputy Director, SW Regions Group | Update from Regions Group, including RISE Teams.
- Professor John Jerrim | Professor of Education & Social Statistics at UCL | Attendance & disadvantaged high prior attainers.
- Krisha Gandhi and DEI Partnership Group | Head of Primary & Deputy Head of Campus | Where are we with DEI in the SW?
- Nick Wakeling | Director of Colyton Foundation | New approaches to disadvantaged high prior attainers in SW.
- Stephanie Hamilton | Director of The Engagement Platform (Part of ImpactEd) | Research around pupil, parent and staff engagement.

This exceptional line-up reflects our vision to create world-class opportunities for school leaders to learn, develop and connect. At SWIFT, we are passionate about ensuring schools across the South West have access to the best regional, national and international research, recognising the challenges many school leaders face in rural and coastal communities.

We also understand the time pressures and funding challenges schools experience. That's why our conference programme is designed to provide choice and flexibility, allowing you to select sessions that best meet your interests and priorities. And because SWIFT is a not-for-profit organisation, we are able to offer this high-quality experience at just £100 for SWIFT members and £150 for all other colleagues.

To learn more about our previous Summer Conferences, visit our website [HERE](#). We hope to see you on 19 June 2025 - thank you for your time and consideration.

Martin Smith
Executive Director, SWIFT

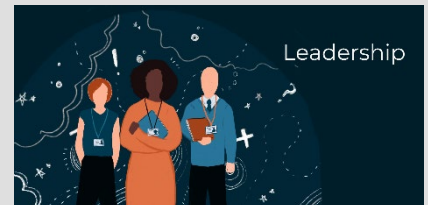
Please note: payment is by INVOICE ONLY.

Cost: SWIFT Members - £100 | Other Colleagues - £150

Contact us

If you have any questions, please contact

robin.scott@sw-ift.org.uk



REGISTER [HERE](#)

Passive Intervention and Prevention Strategies (PIPS) Training

Tuesday 11 March 2025, 0900 - 1600, Countess Wear Community School, Exeter

PIPS training is aimed at all staff working in Primary Schools, Secondary Schools, Special Schools and Alternative Provisions.

It aims to support staff in developing a consistent, effective and acceptable team approach to managing behaviour, while, crucially, maintaining positive relationships and minimising risk for all.

Expected Outcomes from the Two Modules:

- experience and practice the skills of guiding, safe touch and holding
- explore how these acts of care combine with calming, diffusing and problem-solving strategies
- experience passive intervention strategies designed to follow rather than force movement
- identify key elements for developing a consistent team approach to managing challenge
- improve knowledge and understanding around Risk Assessment
- increase awareness of the importance of recording and reporting, monitoring and evaluating
- provide a process of repair and reflection for both staff and children
- develop an increased sense of confidence at times of crisis

Cost: £85 per person for SWIFT member schools | £130 per person for non-member schools

Contact us

If you have any questions, please contact

robin.scott@sw-ift.org.uk



REGISTER [HERE](#)

AQA Writing for GCSE English Language Reaching Grade 7-9

Tuesday 4 March 2025, 1000 – 1500, Oldway Primary School, Paignton

This is an AQA course which will be delivered by experienced lead examiner Lance Hanson.

Course Description

This course will:

- focus on skills that students can use to improve performance and gain the highest marks
- explore how students cover AOs in exemplar responses
- provide you with a range of classroom activities to encourage independent thinking and learning skills to maximise your student's potential

Target Audience

All teachers of GCSE English Language and in particular Post 16 providers.

Costs

SWIFT Members: £175

Other colleagues: £195

FIND MORE INFORMATION [HERE](#)

NPQ DfE Registration Open! Begin Your Leadership Journey Now!

The [DfE NPQ registration service](#) opened on 10 February for the Spring (April) 2025 cohort of NPQs. Scholarship places are available for all schools in:

- NPQ in Headship
- NPQ for SENDCOs
- NPQ in Leading Primary Maths

Scholarship places for all other NPQs are available for schools with highest disadvantage and you can check your school's eligibility with the DfE NPQ registration service.

SWIFT and LSSW has developed excellent relationships with lead providers, Teach First and NlOT, which has secured a healthy number of funded places for the region for the Spring cohort, but NPQ scholarships are limited, and we urge **anyone interested to apply as soon as possible**.

DfE NPQ registration must be completed alongside a lead provider application. Full details of the application links and guidance can be found on the Leading Schools South West website [HERE](#).

Contact

Fiona McNeile, Teaching School Hub Manager - fiona.mcneile@sw-ift.org.uk

FIND MORE INFORMATION [HERE](#)

FREE Support for Pupil Premium Key Stage 2 Pupils

We are pleased announce an exciting opportunity to provide direct support for Key Stage 2 Pupil Premium (PP) pupils in your school.

Atom Learning, The Colyton Foundation and SWIFT are working together in a positive partnership to provide **FREE** access to Atom Home to pupils across Cornwall, Devon, Dorset and Somerset primary schools.

This responsive online learning platform is proven to successfully support attainment through tailored support that builds confidence, strengthens knowledge, and prepares children for the transition to secondary education.

FIND MORE INFORMATION [HERE](#)

Professional Communities

Professional Communities bring colleagues together to network, connect with leading practice, hear from expert speakers, and provide mutual support. Held termly, our team of Professional Community Leads provide a high level of expertise, enabling the design of high-quality agendas, recruitment of expert speakers and the identification of local expertise. Contributors include leading national voices and key officials from national agencies, including Ofsted and researchers from the Education Endowment Fund (EEF).



- School Business Management
- Primary Oracy
- Primary Languages
- Primary SEND
- Primary Art
- Equality & Diversity
- Estates Management
- Primary Design & Technology
- Primary Character Education
- RE
- PSHE
- Safeguarding
- Primary Geography & History
- Secondary Computing
- Secondary Geography
- Primary Curriculum & Assessment

FIND MORE INFORMATION [HERE](#)

Primary Subject Leader Briefings

Early Years, Maths and English Subject Leader Briefings for primaries are designed to provide termly updates, guidance and examples of effective practice, drawing on area and national sources. Briefings are delivered by experts and planned in co-ordination with our Subject Masterclasses and Professional Communities.



- Early Years with Phil Armstrong | Early Excellence
- English with Danni Cooke | Ilsham English Hub Lead
- Maths with Josh Lury | CODE Maths Hub

No charge for SWIFT members.

FIND MORE INFORMATION [HERE](#)

Upcoming Events – March / April 2025

EYFS & PRIMARY

★ **Getting Gross Motor Going | Monday 10 March | 1300 - 1500 | Online | ECSA**

Book your place [HERE](#)

★ **KS2 Cross-School Writing Moderation | Wednesday 12 March | 1315 - 1530 | Oldway Primary School | RTSA**

Book your place [HERE](#)

★ **Early Years - Spring Term Cross-School Moderation | Friday 14 March | 1230 - 1530 | Oldway Primary School | RTSA**

Book your place [HERE](#)

★ **Understanding sensory play opportunities to enhance early maths concepts | Wednesday 19 March | 1330 - 1530 | Online | ECSA**

Book your place [HERE](#)

★ **Primary Maths Subject Leader Briefing | Wednesday 19 March | 1300 - 1600 | Online | RTSA**

Book your place [HERE](#)

★ **Planning for and delivering progression in Primary Art | Thursday 20 March | 1300 - 1500 | Countess Wear Community School | ECSA**

Book your place [HERE](#)

★ **Primary Science Subject Leader Briefing | Wednesday 26 March | 1300 - 1600 | Online | RTSA**

Book your place [HERE](#)

★ **Emotional Intelligence skills to boost learning, resilience & perseverance | Wednesday 26 March | 1330 - 1500 | Online | ECSA**

Book your place [HERE](#)

★ **Inclusion of Growth Mindset Concepts in Early Years Practice & Provision | Wednesday 2 April | 1330 - 1500 | Online | ECSA**

Book your place [HERE](#)

★ **Early Years Subject Briefing ONLINE | Thursday 24 April | 0930 - 1530 | Online | ECSA**

Book your place [HERE](#)

★ **TA Training: Promoting positive interactions in the primary classroom | Tuesday 29 April | 1230 - 1500 | Countess Wear Community School | ECSA**

Book your place [HERE](#)

SECONDARY

☆ **AQA Writing for GCSE English Language Reaching Grade 7-9 | Tuesday 4 March | 1000 - 1500 | Oldway Primary School | RTSA**

Book your place [HERE](#)

CROSSPHASE

☆ **Supporting Defensive or Pathologically Demand Avoidant Learners | Tuesday 4 March | 0930 - 1130 | Countess Wear Community School | ECSA**

Book your place [HERE](#)

☆ **Planning Lessons for Pupils with Dyscalculia | Friday 7 March | 1300 - 1530 | Oldway Primary School | RTSA**

Book your place [HERE](#)

☆ **Passive Intervention and Prevention Strategies (PIPS) Training | Tuesday 11 March | 0900 - 1600 | Countess Wear Community School | ECSA**

Book your place [HERE](#)

☆ **TA Training: Understanding Self-Regulation Skills | Wednesday 12 March | 1000 - 1130 | Online | ECSA**

Book your place [HERE](#)

☆ **Spring Leadership Forum | Thursday 20 March | 1530 - 1700 | Online | SWIFT**

Book your place [HERE](#)

☆ **Dyslexia - Supporting Struggling Readers & Spellers | Friday 21 March | 1300 - 1530 | Oldway Primary School | RTSA**

Book your place [HERE](#)

Professional Communities

- **Secondary Leaders Professional Community | Friday 28 February | 1100 - 1500 | Buckfast Abbey Conference Centre | RTSA**
Book your place [HERE](#)
- **Sixth Form Professional Community | Wednesday 5 March | 1300 - 1700 | Buckfast Abbey Conference Centre | RTSA**
Book your place [HERE](#)
- **Primary Design Technology Professional Community | Thursday 6 March | 1600 - 1715 | Online | Tarka**
Book your place [HERE](#)
- **Primary Music Professional Community | Monday 10 March | 1600 - 1700 | Roundswell Community Primary Academy | Tarka**
Book your place [HERE](#)
- **Primary Curriculum & Assessment Professional Community | Wednesday 12 March | 1600 - 1700 | Online | Tarka**
Book your place [HERE](#)
- **Primary Computing Professional Community | Wednesday 12 March | 1600 - 1730 | Online | ECSA**
Book your place [HERE](#)
- **RE Professional Community - Crossphase | Monday 24 March | 1600 - 1730 | Online | ECSA**
Book your place [HERE](#)
- **History Professional Community | Tuesday 25 March | 1530 - 1630 | Online**
Book your place [HERE](#)
- **Primary Languages Professional Community | Tuesday 25 March | 1600 - 1700 | Online | RTSA**
Book your place [HERE](#)

Other Events for your Diary

SEMH in Education: The Impact of Neuroscience and Trauma Understanding

Speaker: Tom Pyne, a leading expert in supporting pupils with social, emotional, and mental health (SEMH) needs

Date & Time: Friday 7 March 2025, 9:00 AM - 12:30 PM

Venue: The Kenn Centre, Kennford, Exeter EX67UE

Cost: £35 per person

About Tom Pyne:

Tom is widely esteemed for his work in helping educational staff understand the impact of early life trauma and offering practical strategies to support children and families. His insights have proven invaluable in enabling schools to create environments where all students, regardless of their challenges, can thrive.

During the conference, Tom will share key insights from neuroscience and trauma understanding, as well as practical approaches that you and your team can implement to support pupils more effectively.

To secure your place, please email francesharding@1-2-1mentors.com

Ilsham English Hub

- Various CPD opportunities
[Find more information HERE](#)

Empowering Early Years CPD

- Various CPD opportunities
[Find more information HERE](#)

Maternity Teacher Paternity Teacher Project

- Various CPD opportunities
[Find more information HERE](#)

Cambridge Nationals CPD

- Various CPD opportunities
[Find more information HERE](#)

The Cornerstone English Hub and the Devon and Dorset Computing Hub

- Various CPD opportunities
[Find more information HERE](#)

Please note our events are booking through our [website](#) and [Eventbrite](#)

SWIFT Partnership is sponsored by:



www.sw-ift.org.uk

