



Events



ISSUE 15

Thursday 13 October 2022
Autumn Term Issue

Continuing Professional Development Offers from SWIFT & Our Partners

High quality CPD at affordable rates to enhance professional development in your school.
Access through your SWIFT Membership package at no charge and/or discounted rates.
Or as a non-member, you can access the programmes on a pay-as-you-go basis.

YOU CAN READ HERE TO FIND OUT MORE ABOUT UPCOMING EVENTS AND THANK YOU FOR FORWARDING TO YOUR COLLEAGUES

Professional Communities | Free to Members

- **Secondary SEND Professional Community | Tuesday 18 October 2022 | 1400 – 1530 | Online | ECSA**
[Book your place HERE](#)
- **HR Professional Community | Wednesday 2 November 2022 | 1400 - 1600 | Online | ECSA**
[Book your place HERE](#)
- **Primary English Professional Community | Friday 4 November 2022 | 1315 – 1600 | Trinity Primary School | Tarka**
[Book your place HERE](#)
- **PSHE Professional Community | Tuesday 8 November 2022 | 1330 – 1530 | Countess Wear Community School, Exeter | ECSA**
[Book your place HERE](#)
- **Secondary Food Professional Community | Wednesday 9 November 2022 | 1600 – 1700 | Online | WCTSA**
[Book your place HERE](#)
- **Secondary Leaders Professional Community | Friday 11 November 2022 | Buckfast Abbey Conference Centre | RTSA**
[Book your place HERE](#)
- **Developing the Music Curriculum Professional Community | Tuesday 15 November 2022 | 1600 – 1715 | Online | Tarka**
[Book your place HERE](#)
- **Alternative Education Professional Community | Thursday 17 November 2022 | 1500 – 1600 | Online | RTSA**
[Book your place HERE](#)
- **Secondary Art Professional Community | Friday 18 November 2022 | 1430 – 1630 | Online | Ventrus**
[Book your place HERE](#)
- **Primary Computing Professional Community | Thursday 24 November 2022 | 1530 – 1700 | Online | Ventrus**
[Book your place HERE](#)
- **Secondary Computing Professional Community | Wednesday 30 November 2022 | 1600 – 1730 | Online | Ventrus**
[Book your place HERE](#)

Professional Communities

Autumn 2022

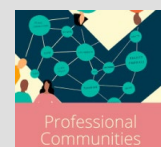
Agendas for Professional Community termly meetings are carefully planned to ensure they capture the priorities of community members, and connect these to the best of regional and national, and available evidence.

Our team of Professional Community leads provide a high level of expertise, enabling the design of high-quality agendas, recruitment of expert speakers and the identification of local expertise.

Because your time is precious, we commit to ensuring that the agendas focused on your core business, such as teaching, assessment and curriculum.

The Professional Communities are **FREE** to colleagues from SWIFT Member schools and a small fee to colleagues from other schools.

Professional Communities are open to all school settings and types.



COMING SOON | Programmes, Training and Events

Autumn Leadership Forum

SWIFT is committed to bringing together leaders from all school settings in the area to connect with each other and make links to the best of local, regional and national. Each Leadership Forum is structured around a Part A where we bring all school leaders together for keynote speakers and presentations and a Part B where school leaders break into phase specific groups for presentations and Q&A.

Part A – Keynote Speakers

Hannah Woodhouse (Regional Director)

Hannah will provide an update from the Regional Directorate on priorities for the region and key DfE policies.

Lee Elliott Major OBE (Professor of Social Mobility, University of Exeter)

Lee will examine the issue of disadvantage in the South West and the need to level up education in the region.

Part B – Phase Groups

EYFS – Nursery Nook | Future Priorities

Primary – Evie Semmens | Harmful Sexual Behaviour

Secondary – Jon Lunn | DfE Provisional Performance Tables

Special – Matthew Barnes | SEND



**Thursday 3
November
2022**

1400 – 1645

Online

Leadership Forum is open to all school leaders from all school settings and types. We are particularly keen to welcome leaders from Devon, Plymouth and Torbay but equally extend a warm invitation to leaders from further afield.

Contact us

If you have any questions, please contact Nicky Sheppard
Nicky.sheppard@sw-ift.org.uk

Forum Registration

To book your place please complete the registration form [HERE](#).

The event is **free** to colleagues from SWIFT Member schools and £35 to colleagues from other schools.

BOOK YOUR PLACE [HERE](#)

Venue: Online

SWIFT Wellbeing Conference

SWIFT is committed to supporting wellbeing in schools and understands how a mentally healthy school can lead to improved student emotional health, and ultimately facilitate a readiness to learn; as well as help to retain and motivate staff.

Scheduled at the halfway point in the academic year, the Wellbeing Conference has been designated for all school colleagues and for onwards sharing in your schools and with this in mind, it will especially benefit SLT Leads, SENDCo and Wellbeing Leads/Champions.

We are pleased to confirm our conference keynotes will be:

Nicola Harvey | Practical Strategies to Support Students Experiencing Anxiety

Faye McGuinness | Wellbeing: a Hopeful Future for Education Staff

Feel encouraged and energised from listening to insights into how you can help to develop high-quality wellbeing strategies in your own school and benefit from a range of morning and afternoon workshops with thoughtful and practical ideas to help support your own wellbeing, as well as the wellbeing of your staff, children and young people.



**Friday 3
February
2023**
0830 – 1545

**Buckfast
Abbey
Conference
Centre**

The Buckfast Abbey Conference Centre is part of the active Benedictine monastery with views of the River Dart, and as part of your day you will enjoy freshly prepared, seasonal, local ingredient refreshments in the dining room overlooking the Abbey and gardens.

Cost

SWIFT Members: £95

Non-members: £150

Contact: Jude Owens

Jude.owens@sw-ift.org.uk

BOOK YOUR PLACE [HERE](#)

Venue: Buckfast Abbey Conference Centre

Making the Difference for Disadvantaged Pupils

Pupil Premium strategies need to be published by 31 December 2022 and need to align with the DfE's 'menu of approaches'. This four-day, face-to-face programme is designed to help you to explore practical, evidence-informed approaches for breaking the link between family income and educational attainment. This supports you to complete your PP strategy - more importantly, it helps you raise the attainment of children most at risk of underachieving.

You'll engage in three face-to-face sessions prior to 31st December to ensure your PP strategy is ready for submission. Two webinars maintain a focus on good implementation. A fourth face-to-face day in February helps you put your strategy into practice through effective Professional Development.



Monday 17
October 2022
to Friday 3
February 2023

Cost: £150 for
two members
of staff

The programme is open to **all primary and secondary schools across Devon** and is aimed at Head teachers and Senior leaders with responsibility for your school's PP strategy.

Kingsbridge Research School
SWIFT
Education Endowment Foundation
Contact: Alison KING
Alison.King@kingsbridgecollege.org.uk

BOOK YOUR PLACE [HERE](#)

Venue: Exeter Racecourse

Future Teachers Event

All of us know or remember a truly brilliant teacher from school who made a real difference to our lives. As a teacher you can use your knowledge and passion for your subject to help children unlock capabilities and talents they didn't know they had. Making sure every pupil gets the same access to a quality education and the opportunity to succeed. Whilst developing a wide range of transferable skills for yourself in the process too.

This event is **for sixth formers in the South West** and will give an insight into what it is like to be a teacher at both primary and secondary level.

Attendees will get the opportunity to meet providers of initial teacher training from the different routes into teaching – School Direct, University, School Centred Initial Teacher Training.

There will also be a round table question and answer session with current trainees, early career teachers and providers of teacher training.



Wednesday 9
November
2022

1230 - 1530

Free to all schools and colleges in Devon, Plymouth and Torbay.

Further information:
Nicky Sheppard

Nicky.sheppard@sw-ift.org.uk

Book [HERE](#)

BOOK YOUR PLACE [HERE](#)

Venue: Buckfast Abbey Conference Centre

Unlocking the TA Toolkit Programme

Unlocking the TA Toolkit is a comprehensive programme which is supported by EEF evidence and aimed at TAs from across the region. From the outset, this programme will engage school leaders and focus on the deployment of TAs and what effective and ineffective practice looks like, ensuring that our approach is in line with the EEF's Making the Best Use of Teaching Assistants guidance report.

Delegates should be working at Level 2 or Level 3 with some responsibilities for managing whole-class sessions. This programme requires a commitment from the Headteacher or a senior leader to attend session 1, 'Key TA Deployment Messages for Senior Leaders' (led by Jon Eaton & Andy Brumby – EEF).



SWIFT
Members £185

Non-members
£245

The Programme comprises 9 half day sessions, between 11 January 2023 and 15 March 2023.

Book [HERE](#)

BOOK YOUR PLACE [HERE](#)

Venue: RTSA - Oldway Primary School, Paignton

Primary Subject Leadership Programme

Tarka Learning partnership - in conjunction with SWIFT - has formed a partnership with the Chartered Management Institute and Petroc to develop a practical programme based on the skills and approaches Primary Subject Leaders need.

Aims:

- To equip participants with a comprehensive understanding of practical subject leadership approaches linked to their own classroom and leadership practice. To understand key elements of curriculum design including intent, implementation and impact.
- To interweave progression statements within curriculum planning including concepts, knowledge and skills.
- To establish high quality features of teaching and learning within their subject.
- To support the development of CPD and subject knowledge for staff.
- To prepare the leader for a deep dive within their subject.

BOOK YOUR PLACE [HERE](#)



Booking will be via Petroc who will also support you with your apprenticeship levy funding – link [HERE](#).

Information Event:

Tuesday 18 October 2022
1600 – 1630 Book [HERE](#)

Programme Dates:

Barnstaple Cohort - First Wednesday of every month
Starting 2 November 2022
1300 – 1600 Book [HERE](#)

Exeter Cohort – First Thursday
Starting 3 November 2022
1300 – 1600 Book [HERE](#)

contact:
andy.ogden@tarkatrust.org.uk

12 monthly half day F2F Sessions
Further details [HERE](#)

Venue:

Barnstaple Cohort - Roundswell Primary, Barnstaple
Exeter Cohort - Newcourt Community Centre, Exeter

AQA Feedback on the 2022 GCSE Examinations

A popular event in the SWIFT CPD calendar, the AQA 'Feedback on Examinations' are key training events, giving teachers essential feedback on recent exams.

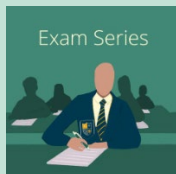
For many schools in the South West, attending face-to-face events can be difficult because they are held in major cities. SWIFT has therefore commissioned AQA to deliver these feedback training events in Devon; which means you can access the course at a significantly reduced rate.

These events will:

- Provide feedback on the summer 2022 examinations for the GCSE specification.
- Examine a selection of student responses at different levels that demonstrated the most important features of cohort performance.
- Discuss how students can better meet assessment objective requirements in their answers.

Consider the implications for teaching and learning.

BOOK YOUR PLACE [HERE](#)



0930 – 1530

Booking by
01/11/2022

Click on subject
in table to book.

GCSE Subject	Date
Geography	08/11/2022
Biology	25/11/2022
Physical Education	04/11/2022
English Literature	17/11/2022
Modern Foreign Languages	18/11/2022
English Language	22/11/2022
Religious Education	24/11/2022
Biology	25/11/2022
Combined Science	29/11/2022
Physics	30/11/2022
Chemistry	01/12/2022

Venue: RTSA Conference Centre
AQA/SWIFT/RTSA
Contact: Faye Steele
Email: faye.steele@sw-ift.org.uk
Phone: 01803 697634 / 07572 891981

Power of Professional Development

Professional development is more than just learning and training for our staff. It acts as a powerful tool to increase teacher retention, boost staff wellbeing and motivation, and address gender inequality in our schools - when it's done well.

Join Emma Sheppard for a short presentation and Q&A on the Power of Professional Development, and how we can use it to have a significant impact on our wider school priorities.

Presentation outline

- A retention landscape - who's staying and going, and why.
- Focus on mid-career professionals - what, specifically is causing them to leave?
- CPD and retention - job satisfaction and career progression
- What does effective CPD look like for this mid-career demographic?



Thursday 24
November
2022

1545 - 1630

SWIFT Members Free

Contact: Emma Sheppard
www.mtpt.org.uk

Book [HERE](#)

BOOK YOUR PLACE [HERE](#)

Venue: Online

Other Events for your Diary

- **School Spider Demonstration Events | Online | Tuesday 18 October 2022, 0945 - 1015 | [Book HERE](#) | Wednesday 19 October 2022, 1530 - 1600 | [Book HERE](#)**
Also presenting at the Business Managers Event on Thursday 13 October 2022.
- **Overlapping Worlds – reading & Writing | Wednesday 19 October 2022 | 1530 – 1630 | Online | The Cornerstone English Hub | [Book HERE](#)**

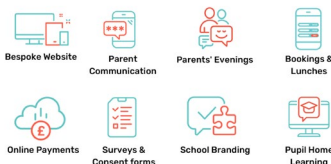
SWIFT Partnership is sponsored by:

SchoolSpider

Transform
the way your
school works

What we do

School Spider is an all in one system that combines multiple systems into one easy to use platform. One for staff, one for parents, one for pupils.



one school login,
one parent login,
one system.

hello@schoolspider.co.uk 0161 635 0235 www.schoolspider.co.uk

