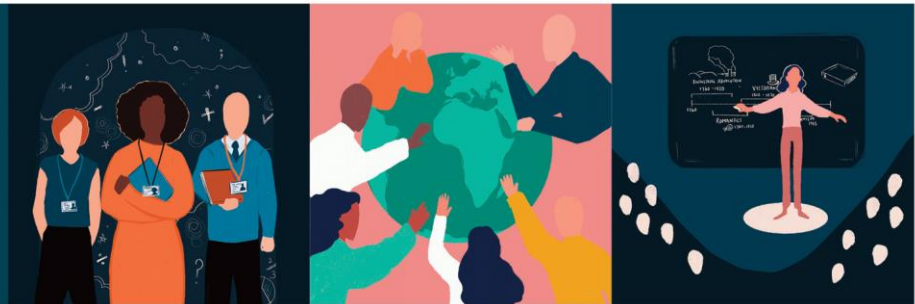




Events



ISSUE 16
Thursday 27 June 2024
Summer Term Issue

Continuing Professional Development Offers from SWIFT & Our Partners

High quality CPD at affordable rates to enhance professional development in your school.
Access through your SWIFT Membership package at no charge and/or discounted rates.
Or as a non-member, you can access the programmes on a pay-as-you-go basis.

YOU CAN READ HERE TO FIND OUT MORE ABOUT UPCOMING EVENTS AND THANK YOU FOR FORWARDING TO YOUR COLLEAGUES

SWIFT Membership 2024-2025 | Registration now open

We are delighted to open registration to schools, federations, trusts and other bodies to join SWIFT Membership for 2024-2025. Our Membership Brochure can be found [HERE](#) and the link for registration is [HERE](#).

SWIFT Membership goes from strength to strength. In 2023-2024, over 220 schools were members of SWIFT. Membership offers schools and trusts outstanding value. Our low-cost, £2 per pupil fee offers you unlimited access to the following highlights:

- Members' discount on an extensive range of **professional development courses and conferences**. We work with leading national trainers like **Paul Dix** and **Mark Rowland** as well as experts from the region.
- Free / unlimited access to over 25 termly **subject and leadership professional communities**
- Free / unlimited access to termly **Leadership Forum** and **Curriculum Forum**
- Free / unlimited access to **Primary Subject Leader briefings** for Early Years, Maths, English and Science
- Free access to **Secondary School Performance Analysis** through Jon Lunn (Performance Director for Ted Wragg MAT)
- Subsidised **Leadership Study Visits** to schools and trusts within the region and across England (limited places)

SWIFT Membership saves staff time as well as money. Our booking system on Eventbrite enables quick access to all our events and makes it quick and easy to register. Many of the 2024-2025 courses are live for bookings now ([HERE](#)) and many more will be added across the year. Increasingly, schools are using SWIFT to support staff training linked to appraisal, providing a quick, one-stop-shop for staff development needs.

If you are a federation or trust you can simply register all your schools together and take advantage of the discounts available.

Contact us

If you have any questions, please contact info@sw-ift.org.uk



REGISTER [HERE](#)

NATIONAL PROFESSIONAL QUALIFICATIONS | APPLY NOW!

The application window is open for the Autumn 2024 cohort of NPQ programmes. As you will be aware, **DfE NPQ scholarships are limited, and we would encourage applications as soon as possible.**

SWIFT in partnership with Leading School South West has an excellent and proven track record in the delivery and completion of NPQs in the region. Over 1260 teachers and leaders in Devon have followed our NPQ programmes in the past three years. Our programmes are facilitated by serving expert local school leaders. All in-person elements of our programmes take place as close as possible to the geographical locations of participants. In the current cohort, in person events take place in Exeter, Plymouth, Buckfast, St Austell and Taunton.

After an extensive 6-month NPQ programme evaluation, this Autumn we are working with two lead providers, Teach First and the National Institute of Teaching to offer schools the best possible NPQ programmes available. Below we outline the lead provider programmes and more information is available [HERE](#):

Teach First Programmes 2024 -2025	NIoT Programmes 2024 -2025
<ul style="list-style-type: none"> ❖ NPQ in Executive Leadership ❖ NPQ in Early Years Leadership ❖ NPQ in Senior Leadership ❖ NPQ in Leading Literacy ❖ NPQ in Leading Primary Maths ❖ NPQ in Leading Teacher Development 	<ul style="list-style-type: none"> ❖ NPQ in Headship ❖ Early Headship Coaching Offer ❖ NPQ for SENCO ❖ NPQ in Leading Behaviour and Culture ❖ NPQ in Leading Teaching

HOW TO APPLY

When applying for the NPQ programme, applicants must select the correct application link and associated guidance. Below are the application links and application guidance for the each of our lead providers:

<u>Teach First NPQ Programmes Application Form</u>	<u>National Institute of Teaching NPQ Programme Application Form</u>
<u>Teach First NPQ Application Guidance</u>	<u>National Institute of Teaching NPQ Application Guidance</u>

We will be able to guarantee a place on the programme for all applications which meet our selection criteria. Scholarship funded places **are limited** nationally and so early application is recommended. To find out if your school is eligible to apply for a funded place, you can check [the DfE guidance](#). We encourage applications to be submitted by **13 September 2024**.

If you have any queries regarding the programmes or application process, please do get in touch - fiona.mcneile@sw-ift.org.uk

FIND MORE INFORMATION [HERE](#)

Passive Intervention and Prevention Strategies (PIPS) Training Tuesday 1 October 2024 | 0900 – 1600 | Countess Wear Community School, Exeter

PIPS training is aimed at all staff working in Primary Schools, Secondary Schools, Special Schools and Alternative Provisions.

It aims to support staff in developing a consistent, effective and acceptable team approach to managing behaviour, while, crucially, maintaining positive relationships and minimising risk for all.

Cost

£85 per person for SWIFT member schools | £130 per person for non-member schools

FIND MORE INFORMATION [HERE](#)

SWIFT EARLY CAREER FRAMEWORK AND APPROPRIATE BODY SERVICE | REGISTER YOUR ECTS FOR SEPTEMBER

We are delighted to announce that sign-up for the SWIFT Early Career Framework (ECF) and Appropriate Body (AB) Service 2024-25 is now open. Entering our fourth year of delivering the SWIFT Teach First ECF programme, we have successfully supported over 1100 Early Career Teachers (ECTs) with our ECF training in the first two years of their career and 911 experienced teachers have been trained as mentors to those early in their career.

With our high-quality Appropriate Body provision, we offer a complete wrap-around service to support ECT induction. If you anticipate new Year 1 or new Year 2 Early Career Teachers (ECTs) starting at your school this September, then you will need to register your school for these services via this short sign-up form:

[CLICK HERE TO SIGN UP FOR THE SWIFT ECF AND/OR AB SERVICE 2024-25](#)

SWIFT SIGN-UP JOURNEY | NEXT STEPS

When you submit your information via our registration form, you will automatically be provided with a 'Sign-Up Journey' next steps checklist. These steps are the essential processes for you to follow to enrol your ECTs and Mentors correctly for both the ECF programme and/or the AB service. Please use this checklist to support the enrolment process. **Please note the DfE ECF portal registration service opens for ECT and Mentor registrations from 24 June 2024.**

If you have any queries regarding the registration process, please do get in touch - ecf@sw-ift.org.uk

FIND MORE INFORMATION [HERE](#)

Advanced Coaching Programme for School Leaders

Starts Wednesday 25 September 2024 | 0930 – 1600 | Countess Wear Community School, Exeter

An ILM approved programme in coaching techniques to enhance your leadership and enable you to develop others effectively.

Aims

- Understand behavioural preferences to improve your self-awareness
- Understand human psychology using cognitive behavioural models
- Refine coaching skills and knowledge using two coaching models
- Practice coaching approaches and methodologies
- Know how to best utilise coaching within school settings
- Create opportunities to apply and evaluate coaching in your setting

Cost: £350 per person for SWIFT member schools | £450 for Non-members. Attendance includes a complimentary full DISC® Profile Assessment and ILM certificate.

FIND MORE INFORMATION [HERE](#)

When the Adults Change - Behaviours Change Two-Year Whole School Programme

Starts Tuesday 3 September 2024 | Online

The sessions will be run online and in Year 1 will be delivered live into your SLT meetings and in Year 2 will be delivered live into your Whole School Staff meetings. The benefits to you will be:

- In Year 1, expert training delivered online direct to your Senior Leadership Team, and in Year 2 to your Whole School Staff.
- Training is carried out in normal staff meeting time 3.30-5.30
- Your staffroom is the online break out room.
- No travel or supply costs.
- No preparation time for your staff training
- Staff not in school that day (e.g. job shares) will be able to attend remotely

FIND MORE INFORMATION [HERE](#)

Professional Communities

Professional Communities bring colleagues together to network, connect with leading practice, hear from expert speakers, and provide mutual support. Held termly, our team of Professional Community Leads provide a high level of expertise, enabling the design of high-quality agendas, recruitment of expert speakers and the identification of local expertise. Contributors include leading national voices and key officials from national agencies, including Ofsted and researchers from the Education Endowment Fund (EEF).



- School Business Management
- Primary Oracy
- Sixth Form
- Estates Management
- Primary SEND
- Secondary SEND
- Equality & Diversity
- Primary Design & Technology
- Secondary Leaders
- PSHE
- Primary Geography & History
- RE
- Primary Science
- Primary Art
- Safeguarding
- Secondary Computing
- Secondary Science
- Primary Curriculum and Assessment
- Secondary Curriculum, Assessment and Data

FIND MORE INFORMATION [HERE](#)

Primary Subject Leader Briefings

Covering Early Years, Maths, English and Science, Subject Leader Briefings for primaries are designed to provide termly updates, guidance and examples of effective practice, drawing on area and national sources. Briefings are delivered by experts and planned in co-ordination with our Subject Masterclasses and Professional Communities.



- Early Years with Early Excellence
- Science with Allie Beaumont
- English with Danni Cooke | Ilsham English Hub Lead
- Maths with Adam Peters | CODE Maths Hub

No charge for SWIFT members.

REGISTER [HERE](#)

'12 Dialogues for Boys & Young Men' Being Safe & Safe to be Around Friday 4 October 2024 | 0900 – 1515 | Oldway Primary School

Work with Michael Conroy; creator of the internationally recognised '12 Dialogues for Boys & Young Men' Being Safe & Safe to be Around.

This training day aims to make 'doing something' feel not just possible but essential and desirable, by equipping those who work with boys/young men to facilitate constructive, strength-based, optimistic dialogues with them that avoid common pitfalls. In addition to helping meet intrinsic ambitions to have positive impact, the training can help settings satisfy and surpass rising extrinsic expectations (such as those of Ofsted, DfE) by combining staff motivation with practical steps, knowledge and confidence, enabling them not just to tick boxes but to genuinely change the script for an emerging generation of boys and young men and the women and girls around them.

Target Audience

Teaching and Support Staff (Years 6 - 13)

Cost

SWIFT Members: £155

Other colleagues: £205

FIND MORE INFORMATION [HERE](#)

Upcoming Events - July/September/October 2024

EYFS & PRIMARY

☆ **Early Years Subject Briefing** | Thursday 26 September | 0930 - 1530 | Online | ECSA

Book your place [HERE](#)

☆ **Primary English Subject Leader Briefing** | Thursday 26 September | 1300 - 1500 | Online | Tarka

Book your place [HERE](#)

☆ **Practical Primary Writing: Staff Meeting Series** | Wednesday 2 October | 1545 - 1715 | Online | Tarka

Book your place [HERE](#)

☆ **Adaptive Teaching: Primary Staff Meeting Series** | Wednesday 9 October | 1545 - 1715 | Online | Tarka

Book your place [HERE](#)

☆ **'Write Inspired' Primary Writing: Staff Meeting Series** | Monday 21 October | 1545 - 1715 | Online | Tarka

Book your place [HERE](#)

CROSSPHASE

☆ **When the Adults Change - Behaviours Change Two-Year Whole School Programme** | Tuesday 3 September | RTSA

Book your place [HERE](#)

☆ **Advanced Coaching Programme for School Leaders** | Wednesday 25 September | 0930 - 1600 | Countess Wear Community School, Exeter | ECSA

Book your place [HERE](#)

☆ **Passive Intervention and Prevention Strategies (PIPS) Training** | Tuesday 1 October | 0900 - 1600 | Countess Wear Community School, Exeter | ECSA

Book your place [HERE](#)

☆ **'12 Dialogues for Boys & Young Men' Being Safe & Safe to be Around** | Friday 4 October | 0900 - 1515 | Oldway Primary School | RTSA

Book your place [HERE](#)

☆ **Makaton Taster Course** | Wednesday 9 October | 1000 - 1200 | Countess Wear Community School, Exeter | ECSA

Book your place [HERE](#)

☆ **TA Training: Supporting pupils with SEND** | Thursday 17 October | 0930 - 1500 | Countess Wear Community School, Exeter | ECSA

Book your place [HERE](#)

Professional Communities

- **Primary Curriculum & Assessment Professional Community** | Wednesday 3 July 2024 | 1600 - 1700 | Online | Tarka
Book your place [HERE](#)
- **Secondary SEND Professional Community** | Thursday 11 July 2024 | 1400 - 1530 | Online | ECSA
Book your place [HERE](#)
- **Primary Oracy Professional Community** | Thursday 11 July 2024 | 1600 - 1700 | Online | Tarka
Book your place [HERE](#)
- **School Business Management Professional Community** | Thursday 3 October 2024 | 1100 - 1300 | Online | ECSA
Book your place [HERE](#)
- **Primary Oracy Professional Community** | Monday 7 October 2024 | 1600 - 1700 | Online | Tarka
Book your place [HERE](#)

- **Primary SEND Professional Community | Thursday 10 October 2024 | 0845 - 1200 | Future Skills Centre, Exeter | ECSA**
[Book your place HERE](#)
- **Primary Art Professional Community | Thursday 10 October 2024 | 1330 - 1530 | Countess Wear Community School | ECSA**
[Book your place HERE](#)
- **Equality & Diversity Professional Community | Tuesday 15 October 2024 | 1430 - 1600 | Countess Wear Community School | ECSA**
[Book your place HERE](#)
- **Estates Management Professional Community | Thursday 17 October 2024 | 1100 - 1300 | Online | ECSA**
[Book your place HERE](#)

Other Events for your Diary

Ilsham English Hub

- **Various CPD opportunities**
[Find more information HERE](#)

Cambridge Nationals Events

- **Various CPD opportunities**
[Find more information HERE](#)

Exeter Maths School – Teach Computing

- **Various CPD opportunities**
[Find more information HERE](#)

Empowering Early Years CPD

- **Various CPD opportunities**
[Find more information HERE](#)

Please note our events are booking through our [website](#) and [Eventbrite](#)

SWIFT Partnership is sponsored by:



www.sw-ift.org.uk

