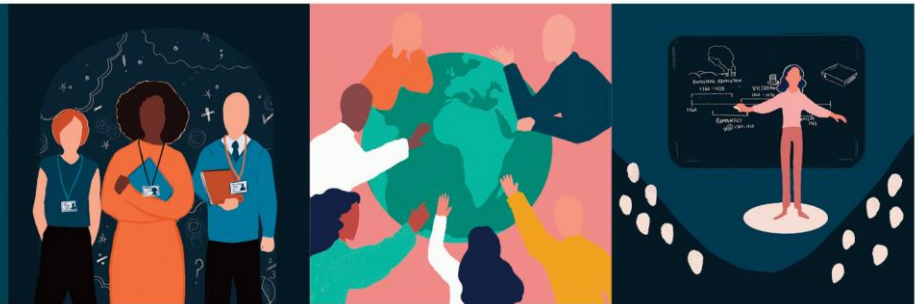




# Events



## ISSUE 3

Thursday 9 November 2023  
Autumn Term Issue

### Continuing Professional Development Offers from SWIFT & Our Partners

High quality CPD at affordable rates to enhance professional development in your school.  
Access through your SWIFT Membership package at no charge and/or discounted rates.  
Or as a non-member, you can access the programmes on a pay-as-you-go basis.

YOU CAN READ HERE TO FIND OUT MORE ABOUT UPCOMING EVENTS AND THANK YOU FOR FORWARDING TO YOUR COLLEAGUES

### SWIFT Leadership Forum – Thursday 30 November | Online

We are inviting SWIFT members to attend this term's SWIFT Leadership Forum on Thursday 30 November 1530-1700, online. We have great line up of speakers attending. The event can be booked [HERE](#).

#### Lee Elliott Major OBE (Professor of Social Mobility, University of Exeter)

Lee will set out the main arguments in his recent publication 'Equity in Education', which sets out a new equity-based approach in education to help teachers improve the prospects of under-resourced and working-class pupils.

#### Nick Walters (Assistant Principal, All-through Head of Inclusion, King Solomon Academy) on approaches to SEND.

Nick will cover many aspects of the King Solomon's approach to SEND, including their graduated approach, use of zones of regulation and communication with parents and carers. King Solomon Academy is a highly ambitious all-through school serving deprived communities in Westminster, Central London. Progress for all phases is well above average. Disadvantaged pupils make exceptional progress.

#### Matilda Browne (Co-Headteacher (Primary), Reach Academy Feltham) on Progression in Reading

Matilda will set out some of the key approaches developed at Reach, with a focus on progression in reading. Reach Academy Feltham is a high-performing All-through school serving deprived communities in Feltham in West London. Part of the Reach Foundation, Reach Academy Feltham consistently achieves exceptional progress across all phases.

The event is **free** to colleagues from SWIFT Member schools and £35 to colleagues from other schools.

#### Dates for your diary

- Spring Leadership Forum | Thursday 8 February 2024 | Online
- Summer Leadership Conference | Thursday 13 June 2024 | Futures Skills Centre, Exeter

#### Contact us

If you have any questions, please contact [info@sw-ift.org.uk](mailto:info@sw-ift.org.uk)

**Autumn Leadership Forum**  
Thursday 30<sup>th</sup> November 2023 | 1530-1700 | Online

**Programme**  
1530-1615 | Part A

Lee Elliott Major OBE (Professor of Social Mobility, University of Exeter)  
Lee will set out the main arguments in his recent publication 'Equity in Education', which sets out a new equity-based approach in education to help teachers improve the prospects of under-resourced and working-class pupils.

1615-1700 | Part B

**OPTION 1:** Nick Walters (Assistant Principal, All-through Head of Inclusion, King Solomon Academy) on approaches to SEND.  
Nick will cover many aspects of the King Solomon's approach to SEND, including their graduated approach, use of zones of regulation and communication with parents and carers.  
King Solomon Academy is a highly ambitious all-through school serving deprived communities in Westminster, Central London. Progress for all phases is well above average. Disadvantaged pupils make exceptional progress.

**OPTION 2:** Matilda Browne (Co-Headteacher (Primary), Reach Academy Feltham) on Progression in Reading  
Matilda will set out some of the key approaches developed at Reach, with a focus on progression in reading.  
Reach Academy Feltham is a high-performing All-through school serving deprived communities in Feltham in West London. Part of the Reach Foundation, Reach Academy Feltham consistently achieves exceptional progress across all phases.

**About Leadership Forum**  
SWIFT is committed to bringing together leaders from all school settings in the area to connect with each other and make use of the best of local, regional and national. Our Autumn and Spring Leadership Forums, as well as our Summer Conference, are some of the ways we fulfil this. Each Leadership Forum is structured around a Part A where we bring all school leaders together for a keynote speaker and a Part B with a choice of sessions.

**Dates for 2023-2024**

- Spring Leadership Forum | Thursday 9<sup>th</sup> Feb 2024 | Online
- Summer Leadership Conference | Thursday 13<sup>th</sup> June 2024 | Futures Skills Centre, Exeter

**Target Audience**  
Leadership Forum is open to all school leaders from all school settings and types. We are particularly keen to welcome leaders from Devon, Plymouth and Torbay but equally welcome a warm invitation to leaders from further afield.

**Fee**  
The event is free to colleagues from SWIFT Member schools and £35 to colleagues from other schools.

**To book**  
On-line booking form at [BSEE](#)

**Contact us**  
If you have any questions, please contact Nick Sheppard [nick.sheppard@sw-ift.org.uk](mailto:nick.sheppard@sw-ift.org.uk)  
Version 30/10/23

[www.sw-ift.org.uk](http://www.sw-ift.org.uk)

REGISTER [HERE](#)

## BOOK NOW | Programmes, Training and Events

### Masterclasses and Longer Programmes

SWIFT, as part of its Universal CPD offer to schools, has a range of Masterclasses and Longer Programmes. These are designed to provide in-depth sets of training for leaders and teachers. They run over the course of a few terms with between 3-5 sessions. Some also have access to online modules. We are able to attract high-calibre national trainers to support current thinking and adaptation of practice over time. You will be joining colleagues from a variety of settings to create a network of people that will provide challenge and support as these programmes are applied to your own school context.



- Refining the Curriculum Masterclass (Secondary and Primary) | Mary Myatt
- Developing Character Education | Lyndsey Bolton
- Social Mobility Masterclass (Secondary and Primary) | Sonia Blandford
- Primary Geography Masterclass | David Weatherly and Sheena Wright
- Primary History Masterclass | David Weatherly and Sheena Wright
- Primary English Writing Masterclass | Debra Myhill

REGISTER [HERE](#)

### Professional Communities

Professional Communities bring colleagues together to network, connect with leading practice, hear from expert speakers, and provide mutual support. Held termly, our team of Professional Community Leads provide a high level of expertise, enabling the design of high-quality agendas, recruitment of expert speakers and the identification of local expertise. Contributors include leading national voices and key officials from national agencies, including Ofsted and researchers from the Education Endowment Fund (EEF).



- School Business Management
- Primary Oracy
- Sixth Form
- Estates Management
- Primary SEND
- Secondary SEND
- Equality & Diversity
- Primary Design & Technology
- Secondary Leaders
- PSHE
- Primary Geography & History
- RE
- Primary PE
- Primary Science
- Primary Art
- Safeguarding
- Secondary Computing
- Secondary Science
- Primary Curriculum and Assessment
- Secondary Curriculum, Assessment and Data

FIND MORE INFORMATION [HERE](#)

### Primary Subject Leader Briefings

Covering Early Years, Maths, English and Science, Subject Leader Briefings for primaries are designed to provide termly updates, guidance and examples of effective practice, drawing on area and national sources. Briefings are delivered by experts and planned in co-ordination with our Subject Masterclasses and Professional Communities.



- Early Years with Early Excellence
- Science with Allie Beaumont
- English with Danni Cooke | Ilsham English Hub Lead
- Maths with Adam Peters | CODE Maths Hub

**No charge for SWIFT members.**

REGISTER [HERE](#)

### #DiverseEd Events

#DiverseEd has evolved into a training company due to the demands of our community. They are committed to moving the agenda forwards regarding Diversity, Equity and Inclusion in our school system and work with state schools, independent schools and international schools to support them with their DEI strategy and their DEI training needs.

**#DiverseEd Leading Diversity, Equity, Inclusion & Belonging in Schools Conference '24 | 26 June 2024 | 0900 – 1600 | Online**

#### #DiverseEd Regional Hub | Bristol

Session 1 | Thursday 7 December 2023 | 1600 - 1730  
 Session 2 | Thursday 8 February 2024 | 1600 – 1730  
 Session 3 | Thursday 14 March 2024 | 1600 – 1730  
 Session 4 | Thursday 9 May 2024 | 1600 – 1730  
 Session 5 | Thursday 20 June 2024 | 1600 - 1730

**Cost**

**£60 + VAT**

**£50 + VAT to attend all 5 sessions**



Register [HERE](#)

Register [HERE](#)

FIND MORE INFORMATION [HERE](#)

### NPQ Spring Cohort | Application Window | Open Now!

The application window for the Spring Cohort of National Professional Qualifications is open **now until 15 January**. The Spring cohort of National Professional Qualifications will begin in late February 2024 and all interested colleagues must complete an [application form](#) which is screened by our selection committee as part of the initial registration process. **This is likely to be the last DfE funded cohort of NPQs and so please encourage any interested colleagues to apply to ensure they don't miss out on this opportunity.**

**Cost**

**DfE Funded**

Programmes start Spring 2024  
 Register [HERE](#)

FIND MORE INFORMATION [HERE](#)

### Parental Leave Group Coaching



**Fully-funded for state school colleagues in the South West, thanks to SWIFT, The Balcarras Trust, Pate's Grammar School and Swindon and Wiltshire TSH**

Join The MTPT Project this December for the winter cohort of their Parental Leave group coaching programme. This highly supportive programme is aimed specifically at colleagues currently on a period of maternity, adoption or shared parental leave.

Across three online sessions, participants explore key personal development themes such as confidence, managing change, identity, and gaining a sense of autonomy and direction, in a small and welcoming group setting. These are baby-friendly events facilitated by Emma Sheppard, Founder of The MTPT Project, the UK's charity for parent-teachers.

There are two cohorts to choose from: a morning "[coffee](#)" cohort, or an afternoon "[naptime](#)" cohort, running from December to February.

Find out more and claim your fully-funded place using the promo code **SW23** on Eventbrite.

FIND MORE INFORMATION [HERE](#)

## November / December 2023

### EYFS & PRIMARY

---

☆ **Primary History Masterclass Series | Monday 13 November 2023 | 1300 - 1600 | Online | Tarka**

Book your place [HERE](#)

---

☆ **Primary Maths Subject Leader Briefing (AM) | Tuesday 14 November 2023 | 0900 - 1200 | Online | RTSA**

Book your place [HERE](#)

---

☆ **Primary Maths Subject Leader Briefing (PM REPEAT) | Tuesday 14 November 2023 | 1300 - 1600 | Online | RTSA**

Book your place [HERE](#)

---

☆ **Primary Geography Masterclass Series | Wednesday 15 November 2023 | 1300 - 1600 | Online | Tarka**

Book your place [HERE](#)

---

☆ **SW&WM Facilitating effective professional development | Friday 17 November 2023 | 0930 - 1600 | Monkerton Primary School | Cornerstone**

Book your place [HERE](#)

---

☆ **Creating A Strong Reading Culture Through Book Corners And Libraries | Wednesday 22 November 2023 | 1530 - 1630 | Online | Cornerstone**

Book your place [HERE](#)

---

☆ **Moderation/Assessment for Nursery Teachers | Thursday 23 November 2023 | 0930 - 1300 | Oldway Primary School | RTSA**

Book your place [HERE](#)

---

☆ **KS1 Cross-School Writing Moderation | Friday 1 December 2023 | 1315 - 1530 | Oldway Primary School | RTSA**

Book your place [HERE](#)

---

☆ **Developing a Whole School Approach to LGBTQ+ Inclusion in Primary Schools | Tuesday 5 December 2023 | 1545 - 1715 | Online | RTSA**

Book your place [HERE](#)

---

☆ **KS2 Cross-School Writing Moderation | Wednesday 6 December 2023 | 1315 - 1530 | Oldway Primary School | RTSA**

Book your place [HERE](#)

---

### SECONDARY

---

☆ **Introduction to Raising Science Capital | Tuesday 14 November 2023 | 1600 - 1730 | Online | Cornerstone**

Book your place [HERE](#)

---

☆ **Facilitating effective professional development in science | Tuesday 28 November 2023 | 1600 - 1730 | Online | Cornerstone**

Book your place [HERE](#)

---

### CROSSPHASE

---

☆ **SWIFT Autumn Leadership Forum | Thursday 30 November 2023 | 1530 - 1700 | Online | SWIFT**

Book your place [HERE](#)

---

☆ **Huh Leaders Course 'Refining the Curriculum' | Thursday 30 November 2023 | 1600 - 1700 | Online | Tarka**

Book your place [HERE](#)

---

☆ **Understanding Sensory Processing Difficulties | Tuesday 5 December 2023 | 0930 - 1230 | Countess Wear Community School | ECSA**

Book your place [HERE](#)

---

## Professional Communities

- **Secondary English Professional Community | Friday 10 November 2023 | 1245 - 1545 | West Exe School | WCTSA**  
Book your place [HERE](#)
- **Secondary SEND Professional Community | Tuesday 14 November 2023 | 1400 - 1530 | Online | ECSA**  
Book your place [HERE](#)
- **Primary PE Professional Community | Wednesday 15 November 2023 | 1330 - 1530 | Countess Wear Community School | ECSA**  
Book your place [HERE](#)
- **Primary Curriculum & Assessment Professional Community | Thursday 16 November 2023 | 1600 - 1700 | Online | Tarka**  
Book your place [HERE](#)
- **Primary Music Professional Community | Monday 20 November 2023 | 1600 - 1715 | Online | Tarka**  
Book your place [HERE](#)
- **RE Professional Community | Thursday 23 November 2023 | 1600 - 1730 | Online | ECSA**  
Book your place [HERE](#)
- **Secondary Computing Professional Community | Thursday 23 November 2023 | 1600 - 1730 | Online | ECSA**  
Book your place [HERE](#)
- **Safeguarding Professional Community | Thursday 23 November 2023 | 1600 - 1700 | Online | Tarka**  
Book your place [HERE](#)
- **Estates Management Professional Community | Wednesday 29 November 2023 | 1000 - 1200 | Online | ECSA**  
Book your place [HERE](#)

## Other Events for your Diary

### Upcoming DEI Events

- **#DiverseEd Conference Various dates | Online | Diverse Educators**  
Find more information [HERE](#)
- **Thematic Workshops | Various dates | Online | Diverse Educators**  
Find more information [HERE](#)
- **Programmes | Various dates | Online | Diverse Educators**  
Leading DEIB in Schools  
Leading Courageous Conversations  
Leading the Diverse Curriculum  
Leading Inclusive Workplaces  
Find more information [HERE](#)

### Jurassic Maths Hub Primary Programmes Specialist Knowledge for the Teaching of Mathematics (SKTM)

- **SKTM - Early Years | Find more information [HERE](#)**
- **SKTM Primary Teachers – Number Pathway | Find more information [HERE](#)**
- **SKTM – Primary Teachers – Spatial Reasoning | Find more information [HERE](#)**
- **SKTM – Teaching Assistants | Find more information [HERE](#)**
- **SKTM – Early Career Teachers | Find more information [HERE](#)**

### Jurassic Maths Hub Secondary Programmes

- **Secondary Subject Leadership Work Group | Launches 16 November 2023 | 1600 – 1730 | Online**  
[Find more information HERE](#)

### Department for Education - Senior Mental Health Lead Training

- [Senior mental health lead training](#) will equip your mental health lead with the knowledge and skills to implement an effective whole school or college approach to mental health and wellbeing. All state schools and colleges can [claim a £1,200 grant](#) to fund DfE quality assured mental health lead training to help them develop their school or college approach to promoting and supporting the mental health and wellbeing of pupils and staff.

[Find more information HERE](#)

### Exeter Maths School – Computing CPD

- **Primary Autumn Term CPD Offer**  
[Find more information HERE](#)
- **Secondary Autumn Term CPD Offer**  
[Find more information HERE](#)

### Empowering Early Years CPD

- **Adult role in Early years Continuous provision: encourage, enable, empower, excite! | 20 November 2023 | Online**
- **EEY: I Can('t) do it! Enabling Growth Mindset resilience skills in early years | 4 December 2023 | Online**  
[Find more information HERE](#)

### Ilsham English Hub – Free CPD

- **An audience with children's author Smriti Halls | 14 November 2023 | 1600-1730 | Online**  
[Find more information HERE](#)
- **Showcases/information sessions about funding and support for schools | 21 November 2023 | Online**  
[Find more information HERE](#)
- **Oral Blending and Segmenting and Soft Sounds | 22 November 2023 | 1700–1800 | Online**  
[Find more information HERE](#)
- **Oral Blending and Segmenting and Soft Sounds | 24 November 2023 | 1200–1300 | Online**  
[Find more information HERE](#)
- **Official DfE accredited Webinar Exploring the Reading Framework | 29 November 2023 | 1600-1700 | Online**  
[Find more information HERE](#)
- **Official DfE accredited Webinar Exploring the Reading Framework | 1 December 2023 | 1200-1300 | Online**  
[Find more information HERE](#)

### Let's Talk Primary

Two sessions aimed at parents and carers of young people aged from 5 to 9 years old, giving a chance for you to hear about the challenges young people face in this ever-changing world and to hear about the tools and techniques you can use to support your children.

- **Let's Talk Primary Session One | 14 November | 1900-2030 | Online**  
[Find more information HERE](#)
- **Let's Talk Primary Session Two | 21 November | 1900-2030 | Online**  
[Find more information HERE](#)

### Plymouth Marjon University Short Courses

- **Speech and Language Therapy (SLT) for Schools | Access Anytime | Online**  
[Find more information HERE](#)

### Cornerstone CPD

- **Upcoming CPD Events November-December**  
[Find more information HERE](#)

Please note our events are booking through our [website](#) and [Eventbrite](#)

SWIFT Partnership is sponsored by:

