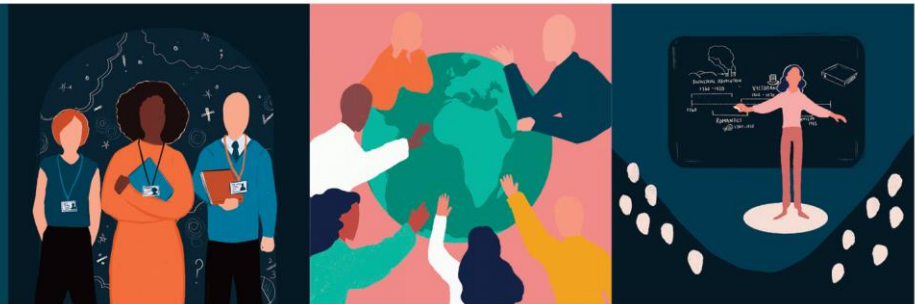




Events



ISSUE 6

Thursday 11 January 2024
Spring Term Issue

Continuing Professional Development Offers from SWIFT & Our Partners

High quality CPD at affordable rates to enhance professional development in your school.
Access through your SWIFT Membership package at no charge and/or discounted rates.
Or as a non-member, you can access the programmes on a pay-as-you-go basis.

YOU CAN READ HERE TO FIND OUT MORE ABOUT UPCOMING EVENTS AND THANK YOU FOR FORWARDING TO YOUR COLLEAGUES

SWIFT Spring Leadership Forum | Online

Thursday 8 February, 1500-1700 | Register NOW

We are delighted to announce details of the SWIFT Spring Leadership Forum, taking place on Thursday 8 February, 1500-1700 online. Please click [HERE](#) to register.

This term's line is full of high quality presenters, covering a range of key educational priorities.

PART A

Keynote 1: Bennie Kara | Diverse Educators (1500-1530)

In this keynote, Bennie will explore how stories shape our social schema. The session includes, among other things, how single-story narratives can be damaging to our society, with reference to gender, race, LGBT identities and disability.

Keynote 2: Jack Worth | NFER (1530-1600)

Teacher recruitment and retention is a key issue for schools, especially in the SW. Jack will provide an up-to-date assessment of the teacher labour market, highlighting trends for the SW.

PART B

Primary Option:

Aaron Meredith and Olivia Bartlett | Reflections on Outstanding (1600-1645)

Secondary Option:

James Lamb | Reflections on Outstanding (1600-1630)

Jon Lunn | School Performance Analysis (1630-1700)

Cost

The event is free to colleagues from SWIFT Member schools and LSSW NPQ Programme Members. For all other colleagues, there is a small charge of £35.

REGISTER [HERE](#)

Contact us

If you have any questions, please contact

martin.smith@sw-ift.org.uk

SOUTH WEST Institute for Teaching
Spring Leadership Forum
Thursday 8 February 2024 | 1500-1700 | Online

PART A
Keynote 1: Bennie Kara | Diverse Educators (1500-1530)
In this keynote, Bennie will explore how stories shape our social schema. The session includes, among other things, how single-story narratives can be damaging to our society, with reference to gender, race, LGBT identities and disability.
Bennie is a former school leader in the East Midlands, who now provides support and training for schools working to diversity and inclusion. She also provides leadership coaching and training. She is the author of 'A Little Guide for Teachers, Diversity in Schools' and the co-author of 'Diverse Educators: A Handbook'. She was awarded the Jean Goodby Prize for Diversity and Inclusion by NFER in 2021 and received the Sage Social Justice Award in 2022.

Keynote 2: Jack Worth | NFER (1530-1600)
Teacher recruitment and retention is a key issue for schools, especially in the SW. Jack will provide an up-to-date assessment of the teacher labour market, highlighting trends for the SW.
Jack, NFER's school workforce lead, is an expert on the teacher labour market. His research and reports aim to understand the changing teaching profession and identify ways of improving teacher recruitment and retention. He has given evidence to the Education Select Committee on five occasions and participants can better retain teachers and is a member of the Department for Education's Teacher Supply Model technical group.

PART B
Primary Option: Aaron Meredith and Olivia Bartlett | Reflections on Outstanding (1600-1645)
Aaron is CEO of The Inspire MAT in Plymouth, made up of five Outstanding primary schools: Elements Community School and The Bridge Primary School. Olivia is Head of School for The Bridge, recently judged Outstanding by Ofsted, having previously been judged Inadequate in 2018. Aaron and Olivia will share their reflections and identify several key take aways.

Secondary Option: James Lamb | Reflections on Outstanding (1600-1630)
James is Headteacher of The Castle School, Taunton. In the recent Ofsted report (October 2020), Castle maintained their Outstanding grading, having been previously inspected in 2009. James will share key reflections on their school improvement journey.

Jon Lunn | School Performance Analysis (1630-1700)
Jon is Director of Performance for Tall Whiggy Trust. Each year, Jon compiles ESM data for schools across the SW region. In this session, Jon will share key data from 2022 summer term, identifying trends and insights.

Target Audience
All school leaders from all school settings and types.

Fees
Free to colleagues from SWIFT Member schools and LSSW NPQ Programme Members. £35 all others.

How to register
Online registration via Eventbrite: [HSBE](#)

Contact us
If you have any questions, please contact Nicky Sheppard: nicky.sheppard@sw-ift.org.uk 0115 9121222
www.sw-ift.org.uk

AQA Feedback Events – Spring Term | Face-to-face

These AQA face to face events offer 5 1/2 hours of networking sessions that seek to draw out the detail of this feedback across a full day. They will provide an opportunity to review each paper with an AQA specialist lead, sharing best practice answers and misconceptions.

An integral part of the day will be providing opportunities to work collaboratively through the paper and discuss nuances with colleagues and AQA leads. Free parking, lunch and refreshments will be included.

AQA Feedback on the 2023 GCSE Examinations

- English Lit - Tuesday 16 January 2024
- MFL - Wednesday 17 January 2024
- English Lang - Monday 22 January 2024
- RE - Wednesday 24 January 2024
- Physics - Monday 29 January 2024
- Mathematics - Wednesday 31 January 2024
- PE - Wednesday 7 February 2024
- Biology - Wednesday 21 February 2024
- Chemistry - Tuesday 12 March 2024
- Combined Science - Monday 25 March 2024

AQA Feedback on the 2023 A-Level Examinations

- Biology - Friday 19 January 2024
- Mathematics - Friday 26 January 2024
- English Lang & Lit - Friday 2 February 2024
- Business - Monday 26 February 2024
- Sociology - Tuesday 27 February 2024
- Psychology - Friday 1 March 2024
- Economics - Monday 4 March 2024

More information and booking links

- GCSE Examinations - <https://t.co/WTwahiya5>
- A-Level Examinations - <https://t.co/sqAS0mFKAH>

Contact us

If you have any questions, please contact

heidi.richards@sw-ift.org.uk

Subject	Date	Location
Computer Science	Wednesday 16.01.2024	Paignton
Design	Monday 22.01.2024	Paignton
English Lang	Monday 22.01.2024	Paignton
English Lit	Tuesday 16.01.2024	Paignton
French	Monday 22.01.2024	Paignton
Geography	Monday 22.01.2024	Paignton
History	Monday 22.01.2024	Paignton
Mathematics	Wednesday 31.01.2024	Paignton
PE	Wednesday 07.02.2024	Paignton
Physics	Monday 29.01.2024	Paignton
Religious Studies	Wednesday 24.01.2024	Paignton
Science	Monday 22.01.2024	Paignton
Spanish	Monday 22.01.2024	Paignton
Visual Arts	Monday 22.01.2024	Paignton

REGISTER [HERE](#)

Lyfta mandala collaboration: an exciting collaborative project for your school

Our partner Lyfta is inviting schools to be part of an exciting collaborative project linked to International LEGO Day. Students will have the chance to explore the story of Wei Wei; the only female LEGO Certified Professional in the world, as she inspires children to build a giant LEGO mandala. Students will then create their own designs, to be part of a giant digital mandala. Not only will students be a part of an exciting, shared project, connecting them to other learners and classrooms, there's also the chance to win some lovely prizes for the school.

It's free and simple to take part!

FIND MORE INFORMATION [HERE](#)

Keeping in Contact with You

It is important to us that you receive our communications.

We all rely on emails and we thank you for remembering to check your spam folder for when messages occasionally go astray.

BOOK NOW | Programmes, Training and Events

Masterclasses and Longer Programmes

SWIFT, as part of its Universal CPD offer to schools, has a range of Masterclasses and Longer Programmes. These are designed to provide in-

depth sets of training for leaders and teachers. They run over the course of a few terms with between 3-5 sessions. Some also have access to online modules. We are able to attract high-calibre national trainers to support current thinking and adaption of practice over time. You will be joining colleagues from a variety of settings to create a network of people that will provide challenge and support as these programmes are applied to your own school context.



- Developing Character Education | Lyndsey Bolton
- Social Mobility Masterclass (Secondary and Primary) | Sonia Blandford

REGISTER [HERE](#)

Professional Communities

Professional Communities bring colleagues together to network, connect with leading practice, hear from expert speakers, and provide mutual support. Held termly, our team of Professional Community Leads provide a high level of expertise, enabling the design of high-quality agendas, recruitment of expert speakers and the identification of local expertise. Contributors include leading national voices and key officials from national agencies, including Ofsted and researchers from the Education Endowment Fund (EEF).



- School Business Management
- Primary Oracy
- Sixth Form
- Estates Management
- Primary SEND
- Secondary SEND
- Equality & Diversity
- Primary Design & Technology
- Secondary Leaders
- PSHE
- Primary Geography & History
- RE
- Primary PE
- Primary Science
- Primary Art
- Safeguarding
- Secondary Computing
- Secondary Science
- Primary Curriculum and Assessment
- Secondary Curriculum, Assessment and Data

FIND MORE INFORMATION [HERE](#)

Primary Subject Leader Briefings

Covering Early Years, Maths, English and Science, Subject Leader Briefings for primaries are designed to provide termly updates, guidance and examples of effective practice, drawing on area and national sources. Briefings are delivered by experts and planned in co-ordination with our Subject Masterclasses and Professional Communities.



- Early Years with Early Excellence
- Science with Allie Beaumont
- English with Danni Cooke | Ilsham English Hub Lead
- Maths with Adam Peters | CODE Maths Hub

No charge for SWIFT members.

REGISTER [HERE](#)

SWIFT ECF and AB Service Update | In Year Starters | Register for our January 2024 ECF Cohort

Any in-year ECTs starting in schools must be registered with our AB team. Year 1 ECTs will be able to join our January ECF Programme and Year 2 ECTs will be able to merge into our Year 2 Subject/Phase specific cohorts. To register an ECT, please kindly complete [this registration form](#) and the ECF and AB teams will contact you to support enrolment. ECTs joining in the Spring term, require all entitlements in place for their statutory induction. For Year 1 ECTS, please ensure that 10% off timetable on top of PPA time is in place and that the ECT is introduced to their Mentor and weekly interactions are planned. The same is applicable for Year 2 ECTs, who are entitled to 5% off timetable on top of PPA time and fortnightly access to mentor support.

For Year 1 ECTs, we have altered our January ECF provision this year to provide an experience in line with September peers. If you have any queries, please contact Fiona.mcneile@sw-ift.org.uk
Register [HERE](#)

FIND MORE INFORMATION [HERE](#)

Parental Leave Group Coaching



Fully-funded for state school colleagues in the South West thanks to Balcarras Trust, Pate's Grammar School, Swindon and Wiltshire TSH, SWIFT, and One Cornwall TSH Partnership

Join The MTPT Project this winter for our December Return to Work workshop - a highly supportive session aimed specifically at colleagues preparing to return to work following a period of maternity, adoption or shared parental leave.

During this 90-minute workshop participants will learn about their legal entitlements as returning parents and the best practice they can request from schools to support their return. The workshop offers the headspace to consider organisational logistics at home and at school, and prepare practically and emotionally for a confident return.

These are baby-friendly events facilitated by Emma Sheppard, Founder of The MTPT Project, the UK's charity for parent-teachers. Find out more and claim your fully funded place using the promo code **SW23** on Eventbrite.

FIND MORE INFORMATION [HERE](#)

DfE Funded NPQ Spring Cohort | FINAL REMINDER | Application Deadline 15 January 2024

Whether you're aiming for a promotion or looking to upskill in your current role, our **fully funded** training helps you develop as a leader and make an impact in the classroom straight away. Choose from [9 programmes](#) designed by subject-matter experts and accredited by the Department for Education. [Leading Schools South West](#) in conjunction with [SWIFT](#) have successfully supported over 1400 programme members since the newly reformed NPQs were released. We have exceptional pass rates and conference experience ratings. Our programmes are facilitated by local serving school leaders, and we build our NPQ cohorts around geographical locations to support your own going leadership network development.

The Spring cohort includes the new **NPQ for Leading Primary Maths** and is an exciting opportunity for teachers and leaders with responsibility for leading maths across a primary key-stage or school and also for those aspiring to have this responsibility. The programme is 12 months with a 3-month assessment window and to be eligible, applicants must have a minimum of one year experience of the Teaching for Mastery or equivalent programme. This DfE funded programme is a great opportunity to develop the knowledge, skills and expertise that underpin effective leadership of Mathematics and will include leading and guiding others to develop their approach to 'mastery mathematics', supporting pupils to build a deep understanding of concepts, secure number sense and positive attitude towards mathematics.

IMPORTANT UPDATE FOR SCHOOLS: This is likely to be the last DfE funded cohort of NPQs. Please encourage any interested colleagues to apply as soon as possible to ensure they don't miss out on this opportunity.

The Spring cohort of National Professional Qualifications will begin in late February 2024 and all interested colleagues must complete an [application form](#) by **15 January 2024**. If you have any queries, please contact Fiona.mcneile@sw-ift.org.uk

FIND MORE INFORMATION [HERE](#)

January/February/March 2024

EYFS & PRIMARY

★ **Character Education Masterclass Series** | Thursday 18 January 2024 | 1300 - 1600 | Online | Tarka
Book your place [HERE](#)

★ **Primary Science Subject Leader Briefing** | Friday 19 January 2024 | 1330 - 1545 | Online | RTSA
Book your place [HERE](#)

★ **TA Training: Promoting positive interactions in the primary classroom** | Thursday 1 February 2024 | 1230 - 1500 | Countess Wear Community School, Exeter | ECSA
Book your place [HERE](#)

★ **Primary English Subject Leader Briefing** | Thursday 8 February 2024 | 1330 - 1530 | Online | Tarka
Book your place [HERE](#)

★ **Primary Practical Science CPD Series** | Wednesday 28 February 2024 | 0915 - 1215 | Oldway Primary School | RTSA
Book your place [HERE](#)

★ **TA Training: New to the role of Teaching Assistant** | Thursday 29 February 2024 | 1230 - 1500 | Countess Wear Community School, Exeter | ECSA
Book your place [HERE](#)

★ **Passive Intervention and Prevention Strategies (PIPS) Training** | Tuesday 5 March 2024 | 0900 - 1600 | Countess Wear Community School, Exeter | ECSA
Book your place [HERE](#)

★ **Supporting Children with ASD and High Anxiety** | Wednesday 6 March 2024 | 0930 - 1230 | Countess Wear Community School, Exeter | ECSA
Book your place [HERE](#)

★ **Developing the Impact of Middle Leaders (Primary)** | Wednesday 6 March 2024 | 0930 - 1530 | Oldway Primary School | RTSA
Book your place [HERE](#)

★ **TA Training: Supporting pupils with SEND** | Thursday 7 March 2024 | 1230 - 1500 | Countess Wear Community School, Exeter | ECSA
Book your place [HERE](#)

★ **KS2 Cross-School Writing Moderation** | Wednesday 13 March 2024 | 1315 - 1530 | Oldway Primary School | RTSA
Book your place [HERE](#)

★ **EYFS Cross-School Spring Term Moderation** | Thursday 14 March 2024 | 0930 - 1300 | Oldway Primary School | RTSA
Book your place [HERE](#)

★ **Understanding 'schematic concepts' in provision & practice** | Thursday 14 March 2024 | 0930 - 1200 | Countess Wear Community School, Exeter | ECSA
Book your place [HERE](#)

★ **Primary Maths Subject Leader Briefing (AM)** | Tuesday 19 March 2024 | 0900 - 1200 | Online | RTSA
Book your place [HERE](#)

★ **Writing Moderation: Year 3** | Tuesday 19 March 2024 | 0900 - 1200 | Countess Wear Community School, Exeter | ECSA
Book your place [HERE](#)

★ **Primary Maths Subject Leader Briefing (PM Repeat)** | Tuesday 19 March 2024 | 1300 - 1600 | Online | RTSA
Book your place [HERE](#)

★ **Writing Moderation: Year 1** | Tuesday 19 March 2024 | 1300 - 1600 | Countess Wear Community School, Exeter | ECSA
Book your place [HERE](#)

★ **Writing Moderation: Year 5** | Thursday 21 March 2024 | 0900 - 1200 | Countess Wear Community School, Exeter | ECSA
Book your place [HERE](#)

★ **Writing Moderation: Year 4 | Thursday 21 March 2024 | 1300 - 1600 | Countess Wear Community School, Exeter | ECSA**

Book your place [HERE](#)

★ **KS1 Cross-School Writing Moderation | Thursday 21 March 2024 | 1315 - 1530 | Oldway Primary School | RTSA**

Book your place [HERE](#)

SECONDARY

★ **AQA English Literature GCSE Feedback on the 2023 Examinations | Tuesday 16 January 2024 | 0930 - 1530 | Oldway Primary School | RTSA**

Book your place [HERE](#)

★ **AQA MFL (French) GCSE Feedback on the 2023 Examinations | Wednesday 17 January 2024 | 0930 - 1530 | Oldway Primary School | RTSA**

Book your place [HERE](#)

★ **AQA English Language GCSE Feedback on the 2023 Examinations | Monday 22 January 2024 | 0930 - 1530 | Oldway Primary School | RTSA**

Book your place [HERE](#)

★ **AQA Religious Studies GCSE Feedback on the 2023 Examinations | Wednesday 24 January 2024 | 0930 - 1530 | Oldway Primary School | RTSA**

Book your place [HERE](#)

★ **AQA Physics GCSE Feedback on the 2023 Examinations | Monday 29 January 2024 | 0930 - 1530 | Future Skills Centre, Exeter | RTSA**

Book your place [HERE](#)

★ **AQA Mathematics GCSE Feedback on the 2023 Examinations | Wednesday 31 January 2024 | 0930 - 1530 | Oldway Primary School | RTSA**

Book your place [HERE](#)

★ **AQA A-Level English Language and Literature Feedback on the 2023 Examinations | Friday 2 February 2024 | 0930 - 1530 | Oldway Primary School | RTSA**

Book your place [HERE](#)

★ **AQA Physical Education GCSE Feedback on the 2023 Examinations | Wednesday 7 February 2024 | 0930 - 1530 | Oldway Primary School | RTSA**

Book your place [HERE](#)

★ **AQA Biology GCSE Feedback on the 2023 Examinations | Wednesday 21 February 2024 | 0930 - 1530 | Oldway Primary School | RTSA**

Book your place [HERE](#)

★ **AQA Business A-Level Feedback on the 2023 Examinations | Monday 26 February 2024 | 0930 - 1530 | Oldway Primary School | RTSA**

Book your place [HERE](#)

★ **AQA Sociology A-Level Feedback on the 2023 Examinations | Tuesday 27 February 2024 | 0930 - 1530 | Future Skills Centre, Exeter | RTSA**

Book your place [HERE](#)

★ **AQA Psychology A-Level Feedback on the 2023 Examinations | Friday 1 March 2024 | 0930 - 1530 | Future Skills Centre, Exeter | RTSA**

Book your place [HERE](#)

★ **AQA Economics A-Level Feedback on the 2023 Examinations | Monday 4 March 2024 | 0930 - 1530 | Oldway Primary School | RTSA**

Book your place [HERE](#)

★ **AQA Chemistry GCSE Feedback on the 2023 Examinations | Tuesday 12 March 2024 | 0930 - 1530 | Future Skills Centre, Exeter | RTSA**

Book your place [HERE](#)

☆ **AQA Sociology A-Level Feedback on the 2023 Examinations | Tuesday 27 February 2024 | 0930 - 1530 | Future Skills Centre, Exeter | RTSA**

Book your place [HERE](#)

☆ **AQA Combined Science GCSE Feedback on the 2023 Examinations | Monday 25 March 2024 | 0930 - 1530 | Venue TBC | RTSA**

Book your place [HERE](#)

☆ **AQA MFL (French) GCSE Feedback on the 2023 Examinations | Wednesday 27 March 2024 | 0930 - 1530 | Oldway Primary School | RTSA**

Book your place [HERE](#)

CROSSPHASE

☆ **Social Mobility Masterclass Series | Wednesday 17 January 2024 | 1400 - 1630 | Online | Tarka**

Book your place [HERE](#)

☆ **Developing a Whole School Approach to Trans Inclusion in Primary and Secondary Schools | Tuesday 6 February 2024 | 1545 - 1715 | Online | RTSA**

Book your place [HERE](#)

☆ **Emotional Health and well-being in Menopause | Wednesday 21 February 2024 | 1530 - 1700 | Online | RTSA**

Book your place [HERE](#)

☆ **What Is Dyscalculia and How Do We Support It In The Classroom? | Friday 23 February 2024 | 1330 - 1530 | Oldway Primary School | RTSA**

Book your place [HERE](#)

☆ **Effective School Marketing – Recruitment, Reputation and Revenue | Tuesday 27 February 2024 | 0900 - 1200 | Online | ECSA**

Book your place [HERE](#)

☆ **Coaching for Leaders | Wednesday 28 February 2024 | 0900 - 1515 | Countess Wear Community School | ECSA**

Book your place [HERE](#)

☆ **Instructional Coaching: Developing Greatness | Wednesday 13 March 2024 | 0900 - 1530 | Countess Wear Community School | ECSA**

Book your place [HERE](#)

☆ **Genitourinary Health in Menopause | Wednesday 20 March 2024 | 1530 - 1700 | Online | RTSA**

Book your place [HERE](#)

Professional Communities

- **Equality & Diversity Professional Community** | Tuesday 23 January 2024 | 1430 - 1630 | Online | ECSA
Book your place [HERE](#)
- **SBM Professional Community** | Thursday 25 January 2024 | 1000 - 1200 | Online | ECSA
Book your place [HERE](#)
- **PSHE Professional Community** | Wednesday 31 January 2024 | 1330 - 1530 | Countess Wear Community School | ECSA
Book your place [HERE](#)
- **Character Education Professional Community** | Thursday 1 February 2024 | 1600 - 1715 | Online | Tarka
Book your place [HERE](#)
- **Primary Oracy Professional Community** | Wednesday 21 February 2024 | 1600 - 1700 | Online | Tarka
Book your place [HERE](#)
- **Primary SEND Professional Community** | Thursday 22 February 2024 | 0845 - 1200 | Exeter Court Hotel | ECSA
Book your place [HERE](#)
- **Secondary SEND Professional Community** | Tuesday 27 February 2024 | 1400 - 1530 | Online | ECSA
Book your place [HERE](#)
- **Primary Design & Technology Professional Community** | Wednesday 28 February 2024 | 1600 - 1715 | Online | Tarka
Book your place [HERE](#)
- **RE Professional Community** | Wednesday 28 February 2024 | 1600 - 1730 | Online | ECSA
Book your place [HERE](#)
- **Sixth Form Professional Community** | Thursday 7 March 2024 | 1300 - 1700 | Oldway Primary School | RTSA
SAVE THE DATE
- **Curriculum and Assessment Professional Development Community** | Thursday 7 March 2024 | 1600 - 1700 | Online | Tarka
Book your place [HERE](#)
- **Secondary Computing Professional Community** | Thursday 7 March 2024 | 1600 - 1730 | Online | ECSA
Book your place [HERE](#)
- **Secondary Leaders Professional Community** | Friday 8 March 2024 | 1100 - 1500 | Buckfast Abbey Conference Centre | RTSA
Book your place [HERE](#)
- **Secondary Curriculum, Assessment and Data Professional Community** | Tuesday 12 March 2024 | 0930 - 1200 | Uffculme School
Book your place [HERE](#)
- **Estates Management Professional Community** | Tuesday 12 March 2024 | 1330 - 1530 | Online | ECSA
Book your place [HERE](#)
- **Primary PE Professional Community** | Tuesday 12 March 2024 | 1330 - 1530 | Countess Wear Community School, Exeter | ECSA
Book your place [HERE](#)
- **Primary Science Professional Development Community** | Thursday 14 March 2024 | 1540 - 1700 | Online | Tarka
Book your place [HERE](#)

- **Primary Music Professional Development Community | Tuesday 19 March 2024 | 1600 - 1715 | Online | Tarka**
[Book your place HERE](#)
- **Primary Geography & History Professional Development Community | Thursday 21 March 2024 | 1600 - 1700 | Online | Tarka**
[Book your place HERE](#)
- **Safeguarding Professional Development Community | Monday 25 March 2024 | 1600 - 1700 | Online | Tarka**
[Book your place HERE](#)

Other Events for your Diary

Upcoming DEI Events

- **#DiverseEd Conference Various dates | Online | Diverse Educators**
[Find more information HERE](#)
- **Thematic Workshops | Various dates | Online | Diverse Educators**
[Find more information HERE](#)
- **Programmes | Various dates | Online | Diverse Educators**
Leading DEIB in Schools, Leading Courageous Conversations, Leading the Diverse Curriculum, Leading Inclusive Workplaces
[Find more information HERE](#)

Devon School Business Managers Association Annual Conference

- **SAVE THE DATE – Wednesday 15th May 2024 – Free to attend**
[Find more information HERE](#)

SW Facilities and Estates Managers Annual Conference

- **SAVE THE DATE – Thursday 20th June 2024 – Free to attend**
[Find more information HERE](#)

Jurassic Maths Hub

- **A variety of opportunities for both Primary and Secondary teachers**
[Find more information HERE](#)

Cambridge Nationals Events

- **Various CPD opportunities**
[Find more information HERE](#)

Department for Education - Senior Mental Health Lead Training

- **[Senior mental health lead training](#)** will equip your mental health lead with the knowledge and skills to implement an effective whole school or college approach to mental health and wellbeing. All state schools and colleges can [claim a £1,200 grant](#) to fund DfE quality assured mental health lead training to help them develop their school or college approach to promoting and supporting the mental health and wellbeing of pupils and staff.
[Find more information HERE](#)

Empowering Early Years CPD

- **Self-Regulation skills Basics - why relational educational approaches work! | 15 January 2024**
- **Adult role in Early years Continuous provision: encourage, enable, empower, excite! | 22 January 2024**
- **Enabling challenge & risk in provision to support Executive functioning skills (including attention, working memory and SR skills) | 29 January 2024**
[Find more information HERE](#)

Ilisham English Hub – Free CPD

- **Various CPD opportunities**
[Find more information HERE](#)

Plymouth Marjon University Short Courses

- **Speech and Language Therapy (SLT) for Schools | Access Anytime | Online**
[Find more information HERE](#)

Cornerstone CPD

- **Upcoming CPD Events February 2024 – March 2024**
[Find more information HERE](#)

Please note our events are booking through our [website](#) and [Eventbrite](#)

SWIFT Partnership is sponsored by:

