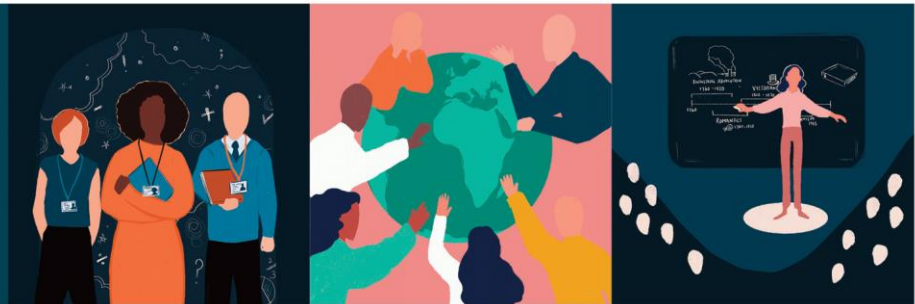




# Events



## ISSUE 9

Thursday 29 February 2024  
Spring Term Issue

### Continuing Professional Development Offers from SWIFT & Our Partners

High quality CPD at affordable rates to enhance professional development in your school.  
Access through your SWIFT Membership package at no charge and/or discounted rates.  
Or as a non-member, you can access the programmes on a pay-as-you-go basis.

[YOU CAN READ HERE TO FIND OUT MORE ABOUT UPCOMING EVENTS AND THANK YOU FOR FORWARDING TO YOUR COLLEAGUES](#)

## SWIFT Summer Conference 2024

Thursday 13 June 2024 | Crossphase | Future Skills Centre, Exeter

We are pleased to welcome an excellent line-up of speakers to this year's conference, including:

- Paul Dix - author of 'When the Adults Change' - leading behaviour specialist, author and reformer
- Laura McInerney - co-founder of Teacher Tapp, former editor of Schools Week and public speaker
- Chris Lubbe - internationally acclaimed inspirational keynote speaker, drawing on story of resistance against the apartheid in South Africa
- Navdeep Sanghara - CEO of The Woodland Academy Trust, a primary MAT in Kent, speaking on trust leadership
- Paul James (CEO) and Katherine Walsh (Director of Inclusion) from the River Learning Trust in Oxfordshire - speaking on leading inclusion and SEND within and across schools.
- Dr Deirdre Hughes OBE - policy adviser, academic researcher / writer specialising in AI and Careers Education
- Dr Pooky Knightsmith - internationally respected speaker, lecturer, trainer and author of child and adolescent mental health and additional needs.
- Specialist panel for Question Time style session.

This amazing line-up reflects our vision to create world-class opportunities for leaders to learn, develop and connect. We are passionate about enabling schools in the South West to have access to the best of regional, national and international research as we know many school leaders experience varying degrees of rural and coastal isolation. We also know your time as leaders is precious and funding limited in schools. Our conference programme will provide choice so you can select what best meets your interests and priorities.

#### Cost

£90 for SWIFT members | £120 all other colleagues. If you are one of the 900 leaders currently training on one of our NPQs with LSSW you are eligible for a 50% discount.

#### Contact us

If you have any questions, please contact [martin.smith@sw-ift.org.uk](mailto:martin.smith@sw-ift.org.uk)



[REGISTER HERE](#)

## Supporting Students with High Academic Potential | One Day Programme

**Thursday 21 March 2024 | Crossphase  
Future Skills Centre, Exeter**

**A DfE approved programme in collaboration with Colyton Foundation,  
Kingsbridge Research School and Ted Wragg Multi Academy Trust.**

SWIFT are delighted to bring to schools in Devon, this subsidised DfE approved programme which focuses on supporting academically able students, particularly those who have experienced disadvantage, to achieve outstanding outcomes at both primary and secondary level. The three sessions in the programme aim to:

- Explore the regional and national context and a HPA framework for excellence.
- Focus on curriculum design and teaching and learning when supporting academically able students and creating a culture of high expectations for all students.
- Focus on implementation applying EEF principles.

Developed and delivered in collaboration with the Colyton Foundation Charity, Ted Wragg MAT and Kingsbridge Research School, the programme draws on the presenters' experience.

### **Programme Presenters**

Nick Wakeling is Director of Studies at Colyton Grammar School and leads the Colyton Foundation.

Siobhan Meredith is the Executive Director of Education for the Ted Wragg Trust and previous Headteacher of Marine Academy Primary, a double Outstanding school in Plymouth.

Alistair Wilson is the Trust Leader for Raising Primary Standards for the Ted Wragg Trust.

Jon Eaton is Director of Kingsbridge Research School and a designated Evidence Lead in Education (ELE).

### **Cost**

£60 per delegate which includes refreshments and lunch.

### **Contact us**

If you have any questions,  
please contact

[fiona.mcneile@sw-ift.org.uk](mailto:fiona.mcneile@sw-ift.org.uk)



REGISTER [HERE](#)

## **AQA GCSE Feedback Events – Spring Term | Face-to-face**

These AQA face to face events offer 5 1/2 hours of networking sessions that seek to draw out the detail of this feedback across a full day. They will provide an opportunity to review each paper with an AQA specialist lead, sharing best practice answers and misconceptions.

Chemistry - Tuesday 12 March 2024

RE - Monday 18 March 2024

Combined Science - Monday 25 March 2024

MFL - Wednesday 27 March 2024

### **Contact us**

If you have any questions, please contact

[heidi.richards@sw-ift.org.uk](mailto:heidi.richards@sw-ift.org.uk)

FIND MORE INFORMATION [HERE](#)

## BOOK NOW | Programmes, Training and Events

### Professional Communities

Professional Communities bring colleagues together to network, connect with leading practice, hear from expert speakers, and provide mutual support. Held termly, our team of Professional Community Leads provide a high level of expertise, enabling the design of high-quality agendas, recruitment of expert speakers and the identification of local expertise. Contributors include leading national voices and key officials from national agencies, including Ofsted and researchers from the Education Endowment Fund (EEF).



- School Business Management
- Primary Oracy
- Sixth Form
- Estates Management
- Primary SEND
- Secondary SEND
- Equality & Diversity
- Primary Design & Technology
- Secondary Leaders
- PSHE
- Primary Geography & History
- RE
- Primary Science
- Primary Art
- Safeguarding
- Secondary Computing
- Secondary Science
- Primary Curriculum and Assessment
- Secondary Curriculum, Assessment and Data

FIND MORE INFORMATION [HERE](#)

### Primary Subject Leader Briefings

Covering Early Years, Maths, English and Science, Subject Leader Briefings for primaries are designed to provide termly updates, guidance and examples of effective practice, drawing on area and national sources. Briefings are delivered by experts and planned in co-ordination with our Subject Masterclasses and Professional Communities.



- Early Years with Early Excellence
- Science with Allie Beaumont
- English with Danni Cooke | Ilsham English Hub Lead
- Maths with Adam Peters | CODE Maths Hub

**No charge for SWIFT members.**

REGISTER [HERE](#)

### Parental Leave Group Coaching

*Fully-funded for state school colleagues in the South West thanks to Balcarras Trust, Pate's Grammar School, Swindon and Wiltshire TSH, SWIFT, and One Cornwall TSH Partnership*



Join The MTPT Project this winter for our December Return to Work workshop - a highly supportive session aimed specifically at colleagues preparing to return to work following a period of maternity, adoption or shared parental leave.

During this 90-minute workshop participants will learn about their legal entitlements as returning parents and the best practice they can request from schools to support their return. The workshop offers the headspace to consider organisational logistics at home and at school, and prepare practically and emotionally for a confident return.

These are baby-friendly events facilitated by Emma Sheppard, Founder of The MTPT Project, the UK's charity for parent-teachers. Find out more and claim your fully funded place using the promo code **SW23** on Eventbrite.

FIND MORE INFORMATION [HERE](#)

## March/April 2024

### EYFS & PRIMARY

---

☆ **Supporting Children with ASD and High Anxiety** | Wednesday 6 March 2024 | 0930 - 1230 | Countess Wear Community School, Exeter | ECSA

Book your place [HERE](#)

---

☆ **KS2 Cross-School Writing Moderation** | Wednesday 13 March 2024 | 1315 - 1530 | Oldway Primary School | RTSA

Book your place [HERE](#)

---

☆ **EYFS Cross-School Spring Term Moderation** | Thursday 14 March 2024 | 0930 - 1300 | Oldway Primary School | RTSA

Book your place [HERE](#)

---

☆ **Understanding 'schematic concepts' in provision & practice** | Thursday 14 March 2024 | 0930 - 1200 | Countess Wear Community School, Exeter | ECSA

Book your place [HERE](#)

---

☆ **Primary Maths Subject Leader Briefing (AM)** | Tuesday 19 March 2024 | 0900 - 1200 | Online | RTSA

Book your place [HERE](#)

---

☆ **Writing Moderation: Year 3** | Tuesday 19 March 2024 | 0900 - 1200 | Countess Wear Community School, Exeter | ECSA

Book your place [HERE](#)

---

☆ **Primary Maths Subject Leader Briefing (PM Repeat)** | Tuesday 19 March 2024 | 1300 - 1600 | Online | RTSA

Book your place [HERE](#)

---

☆ **Writing Moderation: Year 1** | Tuesday 19 March 2024 | 1300 - 1600 | Countess Wear Community School, Exeter | ECSA

Book your place [HERE](#)

---

☆ **Writing Moderation: Year 5** | Thursday 21 March 2024 | 0900 - 1200 | Countess Wear Community School, Exeter | ECSA

Book your place [HERE](#)

---

☆ **Writing Moderation: Year 4** | Thursday 21 March 2024 | 1300 - 1600 | Countess Wear Community School, Exeter | ECSA

Book your place [HERE](#)

---

☆ **KS1 Cross-School Writing Moderation** | Thursday 21 March 2024 | 1315 - 1530 | Oldway Primary School | RTSA

Book your place [HERE](#)

---

☆ **Early Years Subject Briefing** | Thursday 25 April 2024 | 0930 - 1530 | Online | ECSA

Book your place [HERE](#)

---

☆ **Early Years Moderation** | Tuesday 30 April 2024 | 0930 - 1230 | Countess Wear Community School, Exeter | ECSA

Book your place [HERE](#)

---

☆ **Nursery Moderation** | Tuesday 30 April 2024 | 1300 - 1600 | Roundswell Community Primary Academy | Tarka

Book your place [HERE](#)

---

☆ **Please note: Further moderation sessions are taking place in Barnstaple in May 2024.**

## SECONDARY

---

☆ AQA Chemistry GCSE Feedback on the 2023 Examinations | Tuesday 12 March 2024 | 0930 - 1530 | Future Skills Centre, Exeter | RTSA  
Book your place [HERE](#)

---

☆ AQA Religious Education GCSE Feedback on the 2023 Examinations | Monday 18 March 2024 | 0930 - 1530 | Oldway Primary School | RTSA  
Book your place [HERE](#)

---

☆ LAM & EPI in the MFL classroom | Monday 18 March 2024 | Teign School | ESW  
Book your place [HERE](#)

---

☆ AQA Combined Science GCSE Feedback on the 2023 Examinations | Monday 25 March 2024 | 0930 - 1530 | Venue TBC | RTSA  
Book your place [HERE](#)

---

☆ AQA MFL (French) GCSE Feedback on the 2023 Examinations | Wednesday 27 March 2024 | 0930 - 1530 | Oldway Primary School | RTSA  
Book your place [HERE](#)

---

## CROSSPHASE

---

☆ Safeguarding Level 3 Initial 2 day | Wednesday 24 & Thursday 25 April 2024 | 0930 - 1630 | Roundswell Community Primary Academy | Tarka  
Book your place [HERE](#)

---

## Professional Communities

- Sixth Form Professional Community | Thursday 7 March 2024 | 1300 - 1700 | Oldway Primary School | RTSA  
[SAVE THE DATE](#)
- Primary Curriculum and Assessment Professional Development Community | Thursday 7 March 2024 | 1600 - 1700 | Online | Tarka  
[Book your place HERE](#)
- Secondary Curriculum, Assessment and Data Professional Community | Tuesday 12 March 2024 | 0930 - 1200 | Uffculme School  
[Book your place HERE](#)
- Estates Management Professional Community | Tuesday 12 March 2024 | 1330 - 1530 | Online | ECSA  
[Book your place HERE](#)
- Primary PE Professional Community | Tuesday 12 March 2024 | 1330 - 1530 | Countess Wear Community School, Exeter | ECSA  
[Book your place HERE](#)
- Secondary Computing Professional Community | Wednesday 13 March 2024 | 1600 - 1730 | Online | ECSA  
[Book your place HERE](#)
- Primary Science Professional Development Community | Thursday 14 March 2024 | 1540 - 1700 | Online | Tarka  
[Book your place HERE](#)
- Primary Music Professional Development Community | Tuesday 19 March 2024 | 1600 - 1715 | Online | Tarka  
[Book your place HERE](#)

- **Secondary SEND Professional Community | Tuesday 19 March 2024 | 1400 - 1530 | Online | ECSA**  
Book your place [HERE](#)
- **Primary Geography & History Professional Development Community | Thursday 21 March 2024 | 1600 - 1700 | Online | Tarka**  
Book your place [HERE](#)
- **Safeguarding Professional Development Community | Monday 25 March 2024 | 1600 - 1700 | Online | Tarka**  
Book your place [HERE](#)
- **Equality & Diversity Professional Community | Tuesday 23 April 2024 | 1430 - 1630 | Countess Wear Community School, Exeter | ECSA**  
Book your place [HERE](#)

## Other Events for your Diary

### Upcoming DEI Events

- **#DiverseEd Conference Various dates | Online | Diverse Educators**  
Find more information [HERE](#)
- **Thematic Workshops | Various dates | Online | Diverse Educators**  
Find more information [HERE](#)
- **Programmes | Various dates | Online | Diverse Educators**  
Leading DEIB in Schools, Leading Courageous Conversations, Leading the Diverse Curriculum, Leading Inclusive Workplaces  
Find more information [HERE](#)

### Devon School Business Managers Association Annual Conference

- **SAVE THE DATE – Wednesday 15 May 2024 – Free to attend**  
Find more information [HERE](#)

### SW Facilities and Estates Managers Annual Conference

- **SAVE THE DATE – Thursday 20 June 2024 – Free to attend**  
Find more information [HERE](#)

### Whole School SEND

- **Their future in our hands – Navigating school to career transitions: A webinar for Primary, Secondary and College Educators: Part 1 – 13 March 2024**  
Find more information [HERE](#)
- **Their future in our hands – Navigating school to career transitions: A webinar for Primary, Secondary and College Educators: Part 2 – 21 March 2024**  
Find more information [HERE](#)

### Ilsham National English Hub

- **Various CPD opportunities**  
Find more information [HERE](#)

### Jurassic Maths Hub

- **A variety of opportunities for both Primary and Secondary teachers**  
Find more information [HERE](#)

### Exeter Maths School – Teach Computing

- **A variety of opportunities for both Primary and Secondary teachers**  
Find more information [HERE](#)

### Cambridge Nationals Events

- **Various CPD opportunities**  
[Find more information HERE](#)

### Department for Education - Senior Mental Health Lead Training

- [Senior mental health lead training](#) will equip your mental health lead with the knowledge and skills to implement an effective whole school or college approach to mental health and wellbeing. All state schools and colleges can [claim a £1,200 grant](#) to fund DfE quality assured mental health lead training to help them develop their school or college approach to promoting and supporting the mental health and wellbeing of pupils and staff.  
[Find more information HERE](#)

### Empowering Early Years CPD

- **Early Communication skills: Enabling environments practice and provision | 7 March 2024**
- **Understanding Attachment and Anxiety in children - relational approaches | 20 March 2024**
- **Understanding ADHD in girls to empower, enable and better adapt for outcomes | 22 April 2024**
- **Understanding Self-regulation skills basics - why relational approaches in education work! | 29 April 2024**  
[Find more information HERE](#)

### Cornerstone CPD

- **Upcoming CPD Events March 2024**  
[Find more information HERE](#)

Please note our events are booking through our [website](#) and [Eventbrite](#)

SWIFT Partnership is sponsored by:



[www.sw-ift.org.uk](http://www.sw-ift.org.uk)

